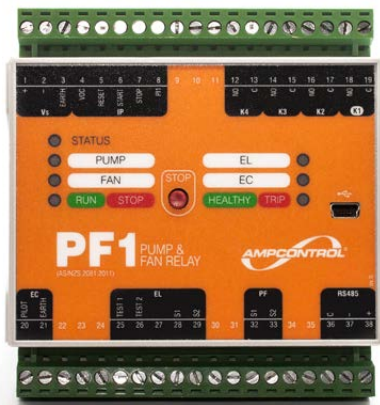
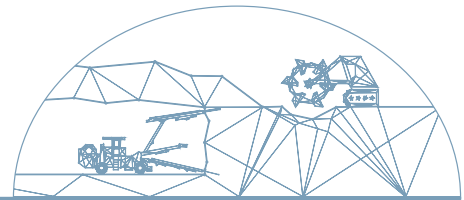


PF1

INTEGRATED PROTECTION RELAY



Ampcontrol's PF1 Pump and Fan relay is an integrated protection relay which performs two standard protection functions and is compliant to AS/NZS2081:2011 – earth leakage and earth continuity.

The PF1 provides selectable control functionality for fan or pump motor installations. When applied correctly, these modes significantly reduce the risk of damage to equipment and also considerably reduce maintenance requirements.

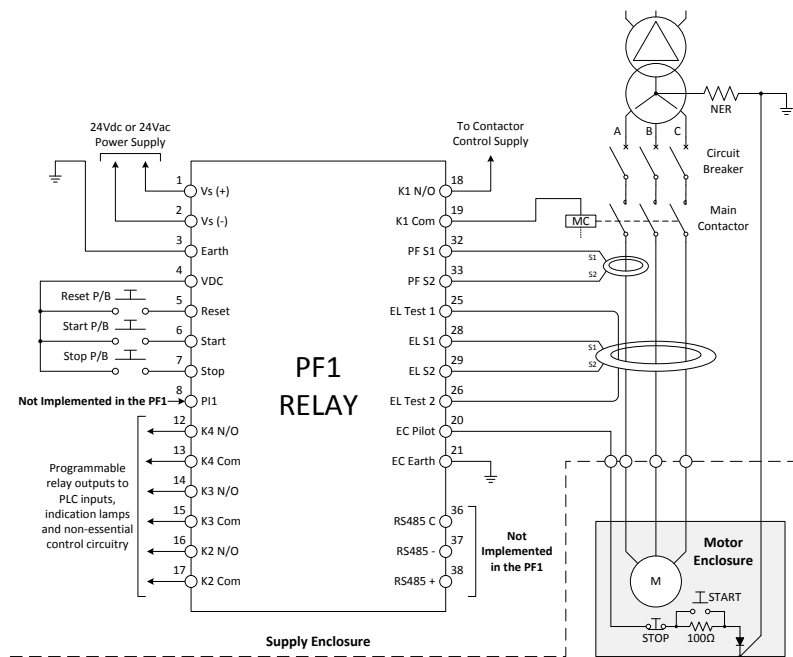
Pump protection mode manages the no-load/ undercurrent condition of a pump by monitoring the load current. When the load on the pump motor decreases the speed of the pump motor will rise to its maximum, which can burn out the pump motor.

Fan protection mode manages the gradual pre-inflation of flexible ventilation conduit, by applying a pulsed (burp) start-up sequence to the fan motor.

Both functions can be deactivated.

FEATURES

- AS/NZS2081:2011 compliant
- 24VAC or 24VDC operation
- Selectable remote start/stop functionality
- LED status indication to aid in fault finding
- Event data logging
- Configurable parameters through USB connection to PC running Smart Tools Software
- Selectable pump protection mode (snore) can assist in maintaining optimum motor efficiency by detecting load increases
- Selectable fan protection mode (burp) can prevent damage to the material of the ventilation tube during the initial stages of inflation.



SPECIFICATIONS

Power Supply

Voltage	24VDC ($\pm 20\%$) or, 24VAC ($\pm 20\%$) 50Hz
Power consumption	10VA

Relay Contacts

Rating	250VAC / 30VDC 1.2A
Power (max)	300VA

Earth Leakage

CT ratio	100:1
Toroid output power (max)	15VA
Primary input current	30 – 1100mA (nominal)
Fault current (1min)	500A at 1 min, 5kA at 3 min
Passband	Wide band mode: 20 – 500Hz ($\pm 3\%$) 50Hz mode: 20 – 90Hz ($\pm 3\%$)

Earth Continuity

Pilot output signal voltage	± 24 VDC
-----------------------------	--------------

Mechanical and Environment

Dimensions (HxWxD)	With plugs: 100 x 105 x 110 mm Without plugs: 100 x 85 x 110 mm
Operating temperature range	-10 to 60°C
Storage temperature range	-20 to 70°C
Humidity	Between 10% relative humidity and the dew point, non-condensing

PART NUMBER

DESCRIPTION

173563

PF1 Pump & Fan relay kit
(including relay, current transformer, earth leakage toroid, USB drive containing user manual, technical datasheet and Smart Tools software and USB cable)