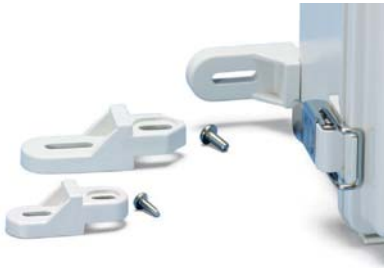


# IP65 LATCH-HINGED PLASTIC BOX



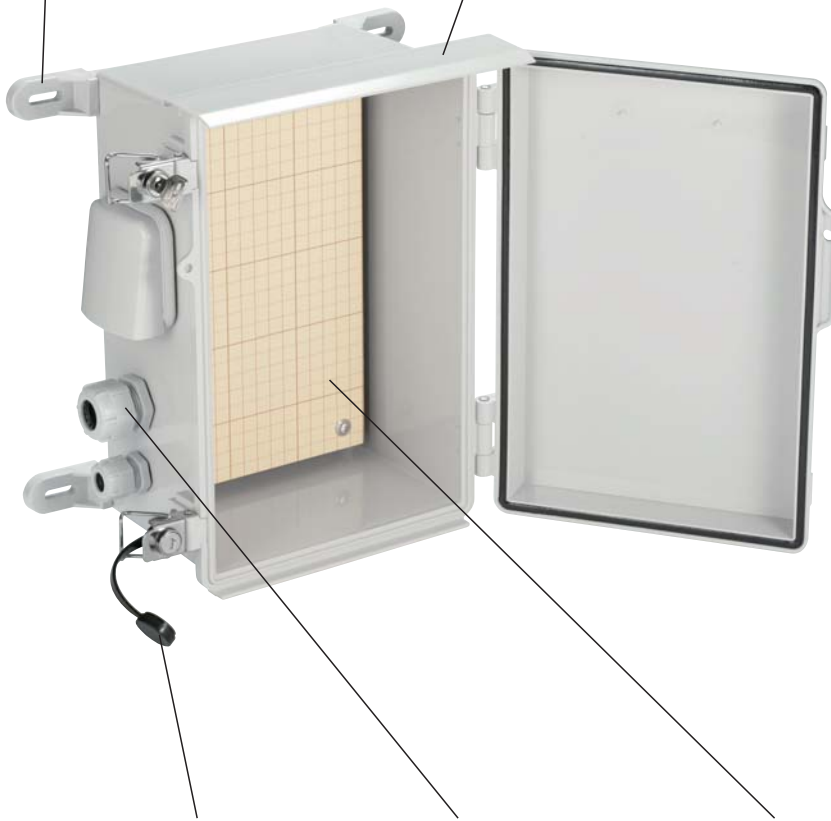
Stainless steel and plastic mounting brackets are available.  
See page 256



BCAR • BCPR series comes with an attachable BRF series outdoor roof.  
See page 245 ~ 246 and 251 ~ 252



Pole mounting bracket for pole installation  
See page 257 ~ 258



Dust protection cap (for lock/key type)  
See page 252



Cable gland  
For waterproofing enclosure openings for cables and wires  
See page 265 ~ 272



Mounting plate  
3 types of mounting plates are available (plastic / steel / wood)  
See page 253 ~ 255

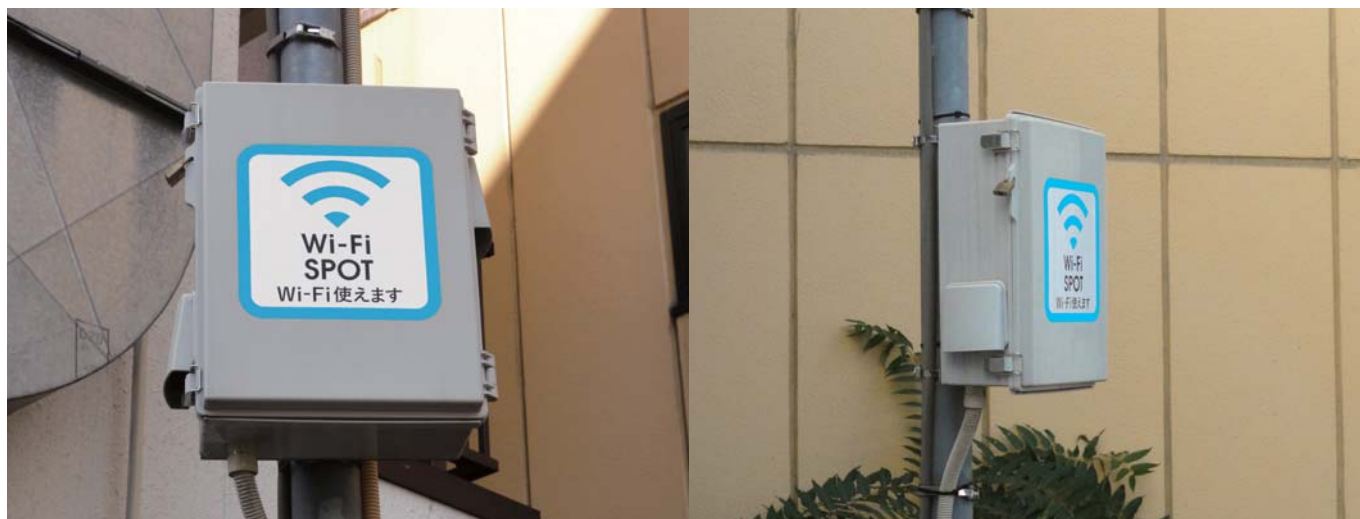


Ventilation cover  
For heat dissipation and prevention of condensation build-up  
See page 262

# APPLICATION EXAMPLE

Universal plastic enclosure series suitable for a wide range of applications such as FA/control, electrical switchboard, network communication and so on.

## OUTDOOR WiFi SPOT Product by Spectra Quest Lab. (Japan)



## SOLAR POWER JUNCTION BOX Product by Kansai Denki (Japan)

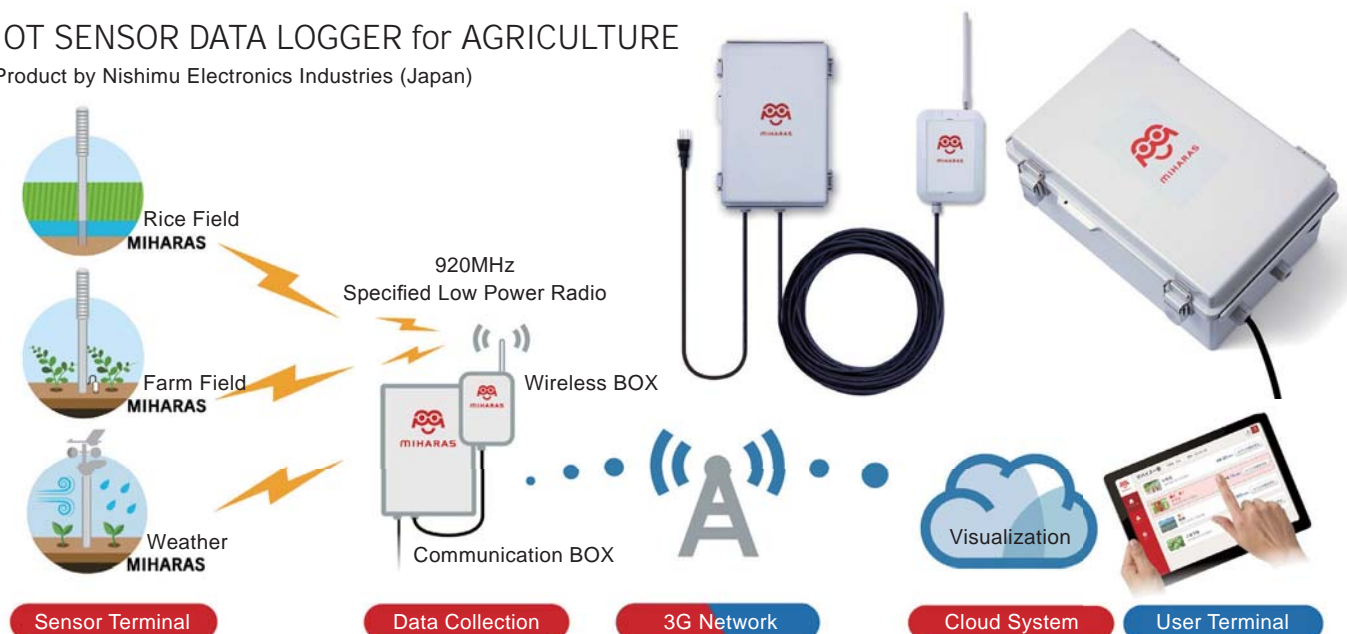


## POWER SWITCHBOARD BOX



## IOT SENSOR DATA LOGGER for AGRICULTURE

Product by Nishimu Electronics Industries (Japan)



## Environmental Data Measurement and Controller Unit

Product by eSOL (Japan)



## "SenSu" COMMUNICATION UNIT with SENSOR

Product by DATA TECHNOLOGY (Japan)



## NETWORK SENSOR SYSTEM for AGRICULTURE

Product by CM Engineering (Japan)



## WILDLIFE DAMAGE MONITORING SYSTEM

Product by CM Engineering (Japan)





## VALVE CONTROLLER

Product by EXEN (Japan)



## BUILDING SURVEILLANCE UNIT

Product by Showa Denki (Japan)



## DIGITAL PRESSURE GAUGE

Product by KRONE CORPORATION (Japan)



## RADIATION MONITOR

POWER SAVER for  
AIR CONDITIONING

Product by Synapes (Japan)

## ANEMOMETER

Product by Fieldpro (Japan)



## WATER GAUGE

Product by Fieldpro (Japan)



## GROUND EXTENSOMETER

Product by GeotechService (Japan)

## MONITORING CAMERA

Product by ACE PROMOTION (Japan)



# BCPK SERIES

# IP65 POLYCARBONATE PLASTIC BOX with LOCK



## Technical Data

Protection class : IP65  
Operating temperature : -20°C ~ +75°C

※Lock types vary according to box size.



- Lockable enclosure best used for tamper prevention in FA, control box, and network communication fields.
- BCPK polycarbonate box is resistant against heat and flames.
- Transparent type is not available for BCPK507018, 507025, 608018, and 608028 models.

Box size  
BCPK091207 ~ 172711  
BCPK212110 and 212113

Box size  
BCPK192810 ~ 203018  
BCPK253515 and 608028

## Components

■ Box UL class = UL94V-0

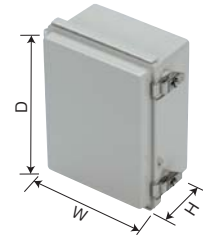
| No. | Part name | Pcs   | Material                         | Color / Finish                |
|-----|-----------|-------|----------------------------------|-------------------------------|
| 1   | Top cover | 1     | Polycarbonate                    | Light gray • Transparent      |
| 2   | Base      | 1     | Glass fiber filled polycarbonate | Light gray                    |
| 3   | Gasket    | 1     | Polyurethane                     | Black                         |
| 4   | Latch     | 1 ~ 3 | Stainless steel                  | Unfinished                    |
| 5   | Screw     | 2 ~ 8 | Steel                            | Trivalent chromate            |
| 6   | Key       | 1 ~ 2 | Diecast zinc • Brass             | Chrome plated • Nickel plated |

- Stainless steel mounting brackets are included together with the following models: 506018, 506025, 507018, 507025, 608018, and 608028.
- Quantity of keys provided vary by the number of locks present.

## Color Type

| Color code          | Cover color / Material      | Base color / Material                         |
|---------------------|-----------------------------|---|
| BCPK [S]            | Light gray / Polycarbonate  | Light gray / Glass fiber filled polycarbonate |
| <b>NEW</b> BCPK [T] | Transparent / Polycarbonate | Light gray / Glass fiber filled polycarbonate |

■ Please suffix color code at the end of the product number.



## Product no. / Dimensions

| Product no. | W   | D   | H     | Weight (g) |       |
|-------------|-----|-----|-------|------------|-------|
|             |     |     |       | S          | T     |
| BCPK091207□ | 90  | 120 | 70    | 242        | 237   |
| BCPK091208□ | 90  | 120 | 85    | 264        | 261   |
| BCPK101507□ | 100 | 150 | 70    | 339        | 337   |
| BCPK101508□ | 100 | 150 | 85    | 360        | 355   |
| BCPK112107□ | 110 | 210 | 75    | 437        | 444   |
| BCPK112110□ | 110 | 210 | 100   | 501        | 509   |
| BCPK112607□ | 110 | 260 | 75    | 520        | 528   |
| BCPK112610□ | 110 | 260 | 100.5 | 585        | 594   |
| BCPK131508□ | 135 | 155 | 85    | 430        | 421   |
| BCPK131808□ | 135 | 185 | 85.5  | 474        | 475   |
| BCPK131810□ | 135 | 185 | 100.5 | 471        | 478   |
| BCPK151509□ | 150 | 150 | 90    | 419        | 422   |
| BCPK151512□ | 150 | 150 | 120.5 | 507        | 508   |
| BCPK162110□ | 160 | 210 | 100   | 563        | 572   |
| BCPK162113□ | 160 | 210 | 130   | 630        | 639   |
| BCPK162610□ | 160 | 260 | 100   | 728        | 738   |
| BCPK162613□ | 160 | 260 | 130   | 805        | 825   |
| BCPK172211□ | 170 | 220 | 110.5 | 664        | 681   |
| BCPK172711□ | 170 | 270 | 110.5 | 771        | 794   |
| BCPK192810□ | 190 | 280 | 100.5 | 875        | 900   |
| BCPK192814□ | 190 | 280 | 141   | 1,065      | 1,094 |
| BCPK203013□ | 200 | 300 | 131.5 | 1,090      | 1,119 |
| BCPK203015□ | 200 | 300 | 151.5 | 1,182      | 1,214 |
| BCPK203018□ | 200 | 300 | 180.5 | 1,295      | 1,330 |
| BCPK212110□ | 210 | 210 | 100   | 743        | 756   |
| BCPK212113□ | 210 | 210 | 130   | 822        | 847   |
| BCPK253515□ | 250 | 350 | 151   | 1,559      | 1,606 |
| BCPK253518□ | 250 | 350 | 181.5 | 1,670      | 1,720 |
| BCPK282813□ | 280 | 280 | 130.5 | 1,391      | 1,433 |
| BCPK283813□ | 280 | 380 | 130   | 1,811      | 1,733 |
| BCPK303015□ | 300 | 300 | 151   | 1,670      | 1,682 |
| BCPK303018□ | 300 | 300 | 181   | 1,782      | 1,795 |
| BCPK304012□ | 300 | 400 | 121   | 1,858      | 1,872 |
| BCPK304015□ | 300 | 400 | 150   | 1,912      | 1,926 |
| BCPK304018□ | 300 | 400 | 181   | 2,083      | 2,098 |
| BCPK353515□ | 350 | 350 | 150   | 2,067      | 1,999 |
| BCPK353518□ | 350 | 350 | 181   | 2,175      | 2,163 |
| BCPK354512□ | 350 | 450 | 120   | 2,442      | 2,429 |
| BCPK354516□ | 350 | 450 | 160   | 2,863      | 2,848 |
| BCPK354520□ | 350 | 450 | 201   | 3,156      | 3,140 |
| BCPK405016□ | 400 | 500 | 160   | 3,149      | 3,152 |
| BCPK405020□ | 400 | 500 | 201   | 3,725      | 3,729 |
| BCPK406018□ | 400 | 600 | 181   | 4,159      | 4,164 |
| BCPK406023□ | 400 | 600 | 231   | 4,639      | 4,645 |
| BCPK506018□ | 530 | 630 | 185   | 5,339      | 6,151 |
| BCPK506025□ | 530 | 630 | 255   | 7,136      | 8,220 |
| BCPK507018S | 530 | 730 | 188   | 7,470      | —     |
| BCPK507025S | 530 | 730 | 255   | 8,260      | —     |
| BCPK608018S | 630 | 830 | 188   | 9,880      | —     |
| BCPK608028S | 630 | 830 | 288   | 11,610     | —     |

■ BCPK507018, 507025, 608018, 608028 models are only available as S color type. ■ Refer to page 247 ~ 250 for detailed dimensions.

## Accessories (Optional parts)



Dust protection cap BCC series  
See page 252



Mounting plate BMP series  
See page 253 ~ 255



Mounting bracket CK • BFL series  
See page 256



Cable gland  
See page 265 ~ 272

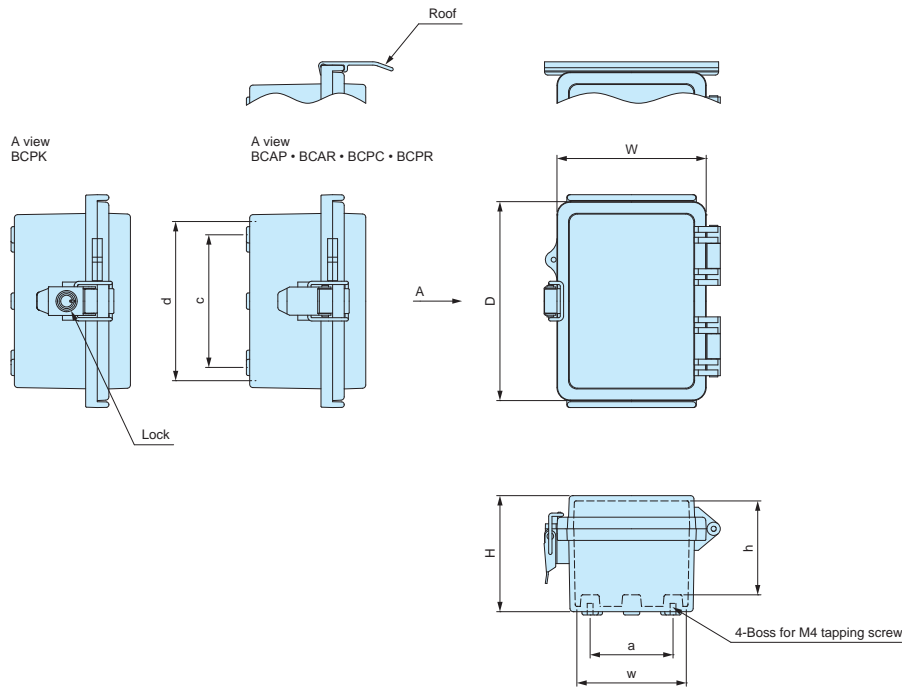


Ventilation part  
See page 259 ~ 262

**BCAP • BCAR • BCPC • BCPK • BCPR dimensions**

091207, 091208

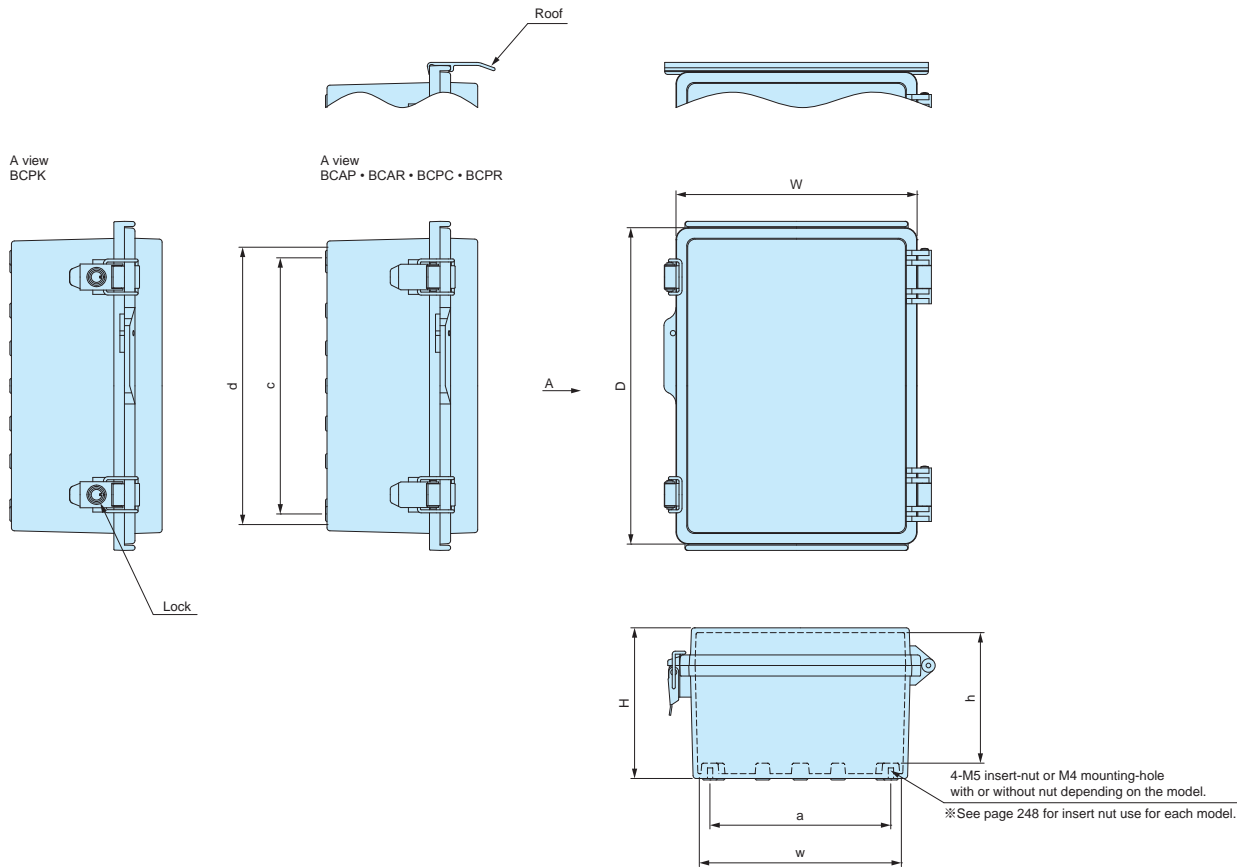
■ Drawings below are reference examples only.  
DXF/DWG/PDF drawings available on our website.



| Product no.                  | W  | D   | H  | Available range |    |      | Bottom hole pitch |    |
|------------------------------|----|-----|----|-----------------|----|------|-------------------|----|
|                              |    |     |    | w               | d  | h    | a                 | c  |
| BCAP • R, BCPC • K • R091207 | 90 | 120 | 70 | 66              | 96 | 56.5 | 50                | 80 |
| BCAP • R, BCPC • K • R091208 | 90 | 120 | 85 | 66              | 96 | 71.5 | 50                | 80 |

101507 ~ 405020

Not available for BCAR • BCPR 151509, 151512, 405016, and 405020 models.







- Inner bosses vary according to box size.  
Refer to DXF/DWG/PDF drawings for more details.

## APPLICATION EXAMPLE



## SURVEILLANCE VIDEO DATA CLOUD ROUTER

Product by LIVELOCK TECHNOLOGIES (Japan)

| Product no.                  | W   | D   | H     | Available range |       |       | Bottom hole pitch |       | Insert nut |
|------------------------------|-----|-----|-------|-----------------|-------|-------|-------------------|-------|------------|
|                              |     |     |       | w               | d     | h     | a                 | c     |            |
| BCAP • R, BCPC • K • R101507 | 100 | 150 | 70    | 76              | 126   | 56.5  | 60                | 110   | without    |
| BCAP • R, BCPC • K • R101508 | 100 | 150 | 85    | 75.5            | 125.5 | 71.5  | 60                | 110   | without    |
| BCAP • R, BCPC • K • R112107 | 110 | 210 | 75    | 85.8            | 185.8 | 61.5  | 70                | 170   | without    |
| BCAP • R, BCPC • K • R112110 | 110 | 210 | 100   | 84.9            | 184.9 | 86.5  | 70                | 170   | without    |
| BCAP • R, BCPC • K • R112607 | 110 | 260 | 75    | 85.8            | 235.8 | 61.5  | 70                | 220   | without    |
| BCAP • R, BCPC • K • R112610 | 110 | 260 | 100.5 | 85.1            | 234.9 | 87.2  | 70                | 220   | without    |
| BCAP • R, BCPC • K • R131508 | 135 | 155 | 85    | 110.5           | 130.5 | 71.5  | 95                | 115   | without    |
| BCAP • R, BCPC • K • R131808 | 135 | 185 | 85.5  | 110.4           | 160.4 | 72.2  | 95                | 145   | without    |
| BCAP • R, BCPC • K • R131810 | 135 | 185 | 100.5 | 110.4           | 160.4 | 87.1  | 95                | 145   | without    |
| BCAP, BCPC • K 151509        | 150 | 150 | 90    | 125.7           | 125.7 | 75.5  | 120               | 120   | without    |
| BCAP, BCPC • K 151512        | 150 | 150 | 120.5 | 124             | 124   | 106   | 117               | 117   | without    |
| BCAP • R, BCPC • K • R162110 | 160 | 210 | 100   | 134             | 184   | 86.6  | 120               | 170   | without    |
| BCAP • R, BCPC • K • R162113 | 160 | 210 | 130   | 134             | 184   | 116.5 | 120               | 170   | without    |
| BCAP • R, BCPC • K • R162610 | 160 | 260 | 100   | 135.1           | 235.1 | 86.6  | 120               | 220   | without    |
| BCAP • R, BCPC • K • R162613 | 160 | 260 | 130   | 134             | 234   | 116.6 | 120               | 220   | without    |
| BCAP • R, BCPC • K • R172211 | 170 | 220 | 110.5 | 144.9           | 194.9 | 96.1  | 132               | 182   | without    |
| BCAP • R, BCPC • K • R172711 | 170 | 270 | 110.5 | 144.9           | 244.9 | 96.1  | 132               | 232   | without    |
| BCAP • R, BCPC • K • R192810 | 190 | 280 | 100.5 | 165.3           | 255.3 | 84.1  | 148               | 238   | with       |
| BCAP • R, BCPC • K • R192814 | 190 | 280 | 141   | 164.2           | 254.2 | 124.6 | 148               | 238   | with       |
| BCAP • R, BCPC • K • R203013 | 200 | 300 | 131.5 | 173.5           | 273.5 | 115.1 | 152               | 252   | with       |
| BCAP • R, BCPC • K • R203015 | 200 | 300 | 151.5 | 173.5           | 273.5 | 135.1 | 152               | 252   | with       |
| BCAP • R, BCPC • K • R203018 | 200 | 300 | 180.5 | 172.4           | 272.3 | 164.1 | 152               | 252   | with       |
| BCAP • R, BCPC • K • R212110 | 210 | 210 | 100   | 185.1           | 185.1 | 86.6  | 170               | 170   | without    |
| BCAP • R, BCPC • K • R212113 | 210 | 210 | 130   | 184             | 184   | 116.6 | 170               | 170   | without    |
| BCAP • R, BCPC • K • R253515 | 250 | 350 | 151   | 222.5           | 322.5 | 135.3 | 206               | 306   | with       |
| BCAP • R, BCPC • K • R253518 | 250 | 350 | 181.5 | 222.5           | 322.5 | 165.8 | 206               | 306   | with       |
| BCAP • R, BCPC • K • R282813 | 280 | 280 | 130.5 | 254             | 254   | 113.6 | 238               | 238   | with       |
| BCAP • R, BCPC • K • R283813 | 280 | 380 | 130   | 254             | 354   | 113.6 | 238               | 338   | with       |
| BCAP • R, BCPC • K • R303015 | 300 | 300 | 151   | 273             | 273   | 134.3 | 256               | 256   | with       |
| BCAP • R, BCPC • K • R303018 | 300 | 300 | 181   | 272.5           | 272.5 | 164.3 | 256               | 256   | with       |
| BCAP • R, BCPC • K • R304012 | 300 | 400 | 121   | 274.1           | 374.6 | 104.6 | 252               | 352   | with       |
| BCAP • R, BCPC • K • R304015 | 300 | 400 | 150   | 273.5           | 373.5 | 133.6 | 252               | 352   | with       |
| BCAP • R, BCPC • K • R304018 | 300 | 400 | 181   | 272.5           | 372.5 | 164.6 | 252               | 352   | with       |
| BCAP • R, BCPC • K • R353515 | 350 | 350 | 150   | 323.6           | 323.6 | 133.6 | 302               | 302   | with       |
| BCAP • R, BCPC • K • R353518 | 350 | 350 | 181   | 322.5           | 322.5 | 164.6 | 302               | 302   | with       |
| BCAP • R, BCPC • K • R354512 | 350 | 450 | 120   | 316.7           | 416.7 | 103.5 | 302               | 402   | with       |
| BCAP • R, BCPC • K • R354516 | 350 | 450 | 160   | 308.7           | 414.7 | 142.6 | 302               | 402   | with       |
| BCAP • R, BCPC • K • R354520 | 350 | 450 | 201   | 306.9           | 412.8 | 183.6 | 302               | 402   | with       |
| BCAP, BCPC • K 405016        | 400 | 500 | 160   | 360.4           | 466.6 | 144   | 352               | 452   | with       |
| BCAP, BCPC • K 405020        | 400 | 500 | 201   | 359.4           | 465.5 | 184   | 352.5             | 452.5 | with       |



**BCAP • BCAR • BCPC • BCPK • BCPR dimensions**

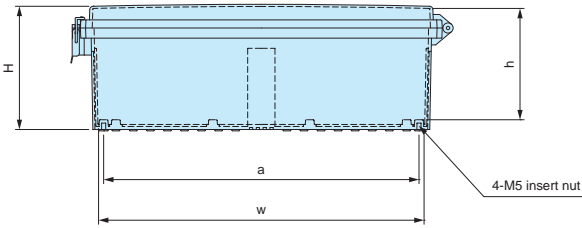
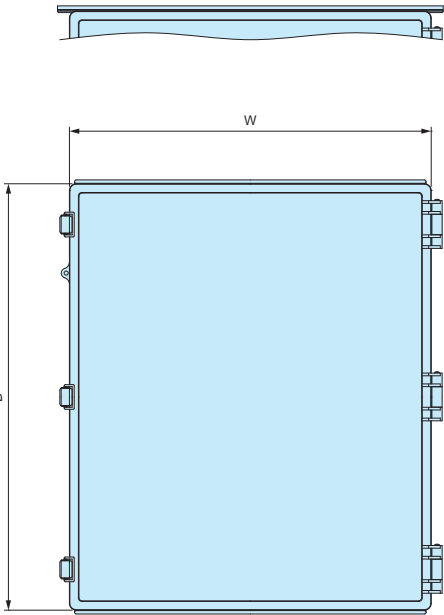
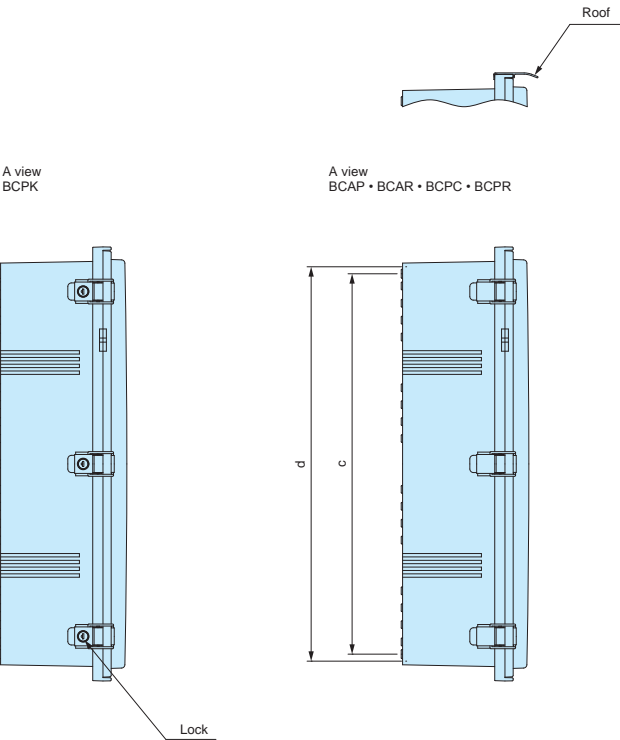
406018 ~ 507025

Not available for BCAR • BCPR 406018 and 406023 models.

■ Drawings below are reference examples only.  
DXF/DWG/PDF drawings available on our website.



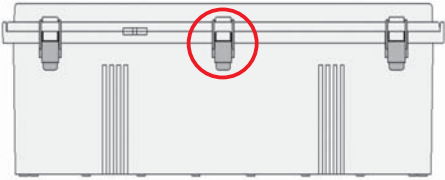
■ Inner bosses vary according to box size.  
Refer to DXF/DWG/PDF drawings for more details.



**Attention when locking the latch**

1. Close latches on both ends first.
  2. Close center latch next.
- ※ Closing the center latch first may create a non-watertight seal.

**Center latch must be closed last!**



| Product no.                  | W   | D   | H   | Available range |       |       | Bottom hole pitch |       |
|------------------------------|-----|-----|-----|-----------------|-------|-------|-------------------|-------|
|                              |     |     |     | w               | d     | h     | a                 | c     |
| BCAP, BCPC • K 406018        | 400 | 600 | 181 | 358.6           | 565.9 | 163.8 | 352.5             | 552.5 |
| BCAP, BCPC • K 406023        | 400 | 600 | 231 | 356.9           | 564.1 | 213.8 | 352               | 552.5 |
| BCAP • R, BCPC • K • R506018 | 530 | 630 | 185 | 476.8           | 576.8 | 163.6 | 462               | 562   |
| BCAP • R, BCPC • K • R506025 | 530 | 630 | 255 | 474.6           | 574.6 | 233.6 | 462               | 562   |
| BCAP • R, BCPC • K • R507018 | 530 | 730 | 188 | 477             | 677   | 166.1 | 462               | 662   |
| BCAP • R, BCPC • K • R507025 | 530 | 730 | 255 | 475             | 676.2 | 236   | 462               | 662   |



## BRF SERIES

## OUTDOOR ROOF



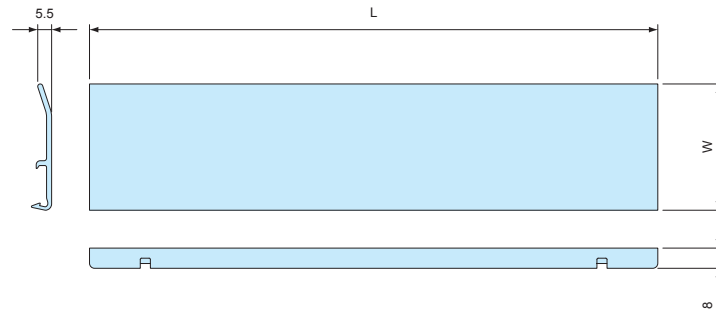
- Recommended to be used for outdoor environments for protection against rain etc.
- Snap-in easy installation.
- Available for BCAP and BCPC • BCPK series except 151509, 151512, 405016, 405020, 406018, and 406023 models.

## Color Type

| Color code | Material | Color / Finish         | Suitable series |
|------------|----------|------------------------|-----------------|
| G          | PVC      | White gray / Unpainted | BCAP            |
| S          | PVC      | Light gray / Painted   | BCPC • BCPK     |

## BRF dimensions

Roof for 091207 ~ 353518

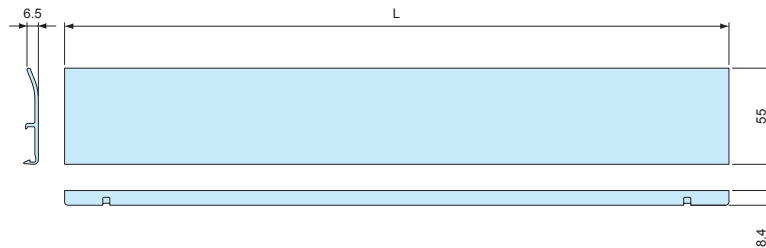


## Product no. / Dimensions

■ Please suffix color code at the end of the product number.

| Product no. | Suitable box  | L   | W  |
|-------------|---|-----|----|
| BRF- 90□    | BCAP • BCPC • BCPK 091207 091208                      | 105 | 45 |
| BRF-100□    | BCAP • BCPC • BCPK 101507 101508                      | 115 | 45 |
| BRF-110□    | BCAP • BCPC • BCPK 112107 112110 112607 112610        | 125 | 45 |
| BRF-135□    | BCAP • BCPC • BCPK 131508 131808 131810               | 150 | 45 |
| BRF-160□    | BCAP • BCPC • BCPK 162110 162113 162610 162613        | 175 | 45 |
| BRF-170□    | BCAP • BCPC • BCPK 172211 172711                      | 185 | 45 |
| BRF-190□    | BCAP • BCPC • BCPK 192810 192814                      | 205 | 45 |
| BRF-210□    | BCAP • BCPC • BCPK 212110 212113                      | 225 | 45 |
| BRF-200□    | BCAP • BCPC • BCPK 203013 203015 203018               | 225 | 50 |
| BRF-250□    | BCAP • BCPC • BCPK 253515 253518                      | 275 | 50 |
| BRF-280□    | BCAP • BCPC • BCPK 282813 283813                      | 305 | 50 |
| BRF-300□    | BCAP • BCPC • BCPK 303015 303018 304012 304015 304018 | 325 | 50 |
| BRF-350□    | BCAP • BCPC • BCPK 353515 353518                      | 375 | 50 |

Roof for 354512 ~ 354520



## Product no. / Dimensions

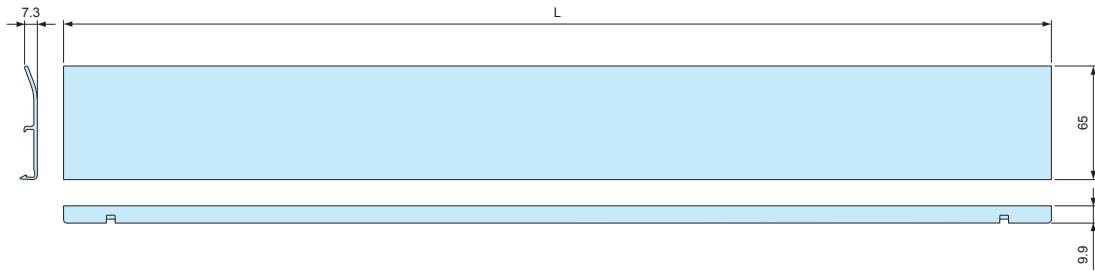
■ Please suffix color code at the end of the product number.

| Product no. | Suitable box                            | L   |
|-------------|---|-----|
| BRF-350L□   | BCAP • BCPC • BCPK 354512 354516 354520 | 380 |

■ S color type is light gray painted.

Roof for 506018 ~ 608028

## Accessories (Optional parts)



### Product no. / Dimensions

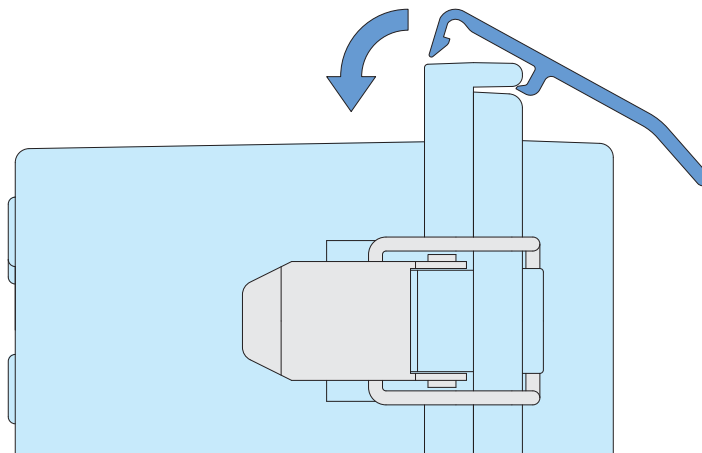
■ Please suffix color code at the end of the product number.

| Product no. | Suitable box                                   | L   |
|-------------|--|-----|
| BRF-530□    | BCAP • BCPC • BCPK 506018 506025 507018 507025 | 565 |
| BRF-630□    | BCAP • BCPC • BCPK 608018 608028               | 665 |

■ S color type is light gray painted.

### ■ How to install BRF outdoor roof.

Refer to illustration.



## BCC-1

## DUST PROTECTION CAP



- Prevent dust and other foreign material entry.
- Protection against corrosion on key hole part in environments such as coastal areas.
- When ordering, please ensure that the quantity required corresponds to the number of latches on your selected enclosure.

### Product no. / Dimensions

| Product no. | Material | Color | Sales unit |
|-------------|----------|-------|------------|
| BCC-1       | Silicone | Black | 1 pc       |

### Suitable Box

| Suitable box                         | Required |
|--------------------------------------|----------|
| BCPK192810 ~ 203018, 253515 ~ 405020 | 2 pcs    |
| BCPK406018 ~ 608028                  | 3 pcs    |

■ Not suitable for BCPK 212110, 212113, 172711, and smaller models.



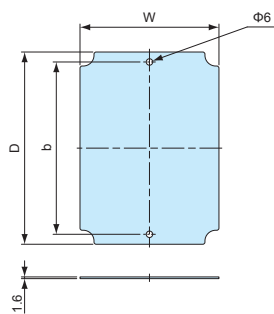
**BMP-Z SERIES****STEEL MOUNTING PLATE**

- Tough but easily customizable.
- Large sized (BMP5060Z, 5070Z and 6080Z) plates have a 90° bent edge.

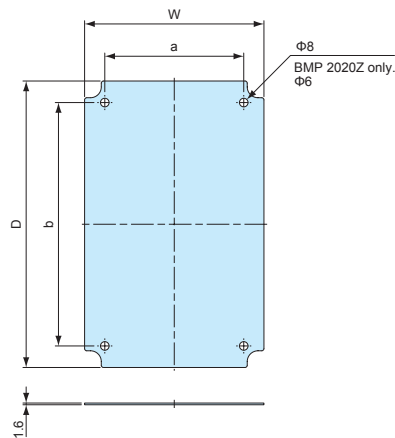
■ Customization services (machining, punch press or clinching nut insertion) are available. See website for more details.



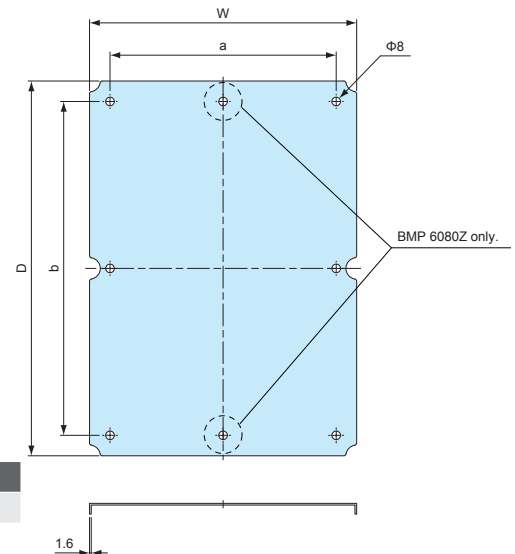
BMP0912Z ~ 1727Z



BMP1928Z ~ 4060Z



BMP5060Z ~ 6080Z



- DXF/DWG/PDF drawings available on our website.

**Components**

| Part name      | Material    | Finish      |
|----------------|-------------|-------------|
| Mounting plate | Steel t=1.6 | Zinc coated |

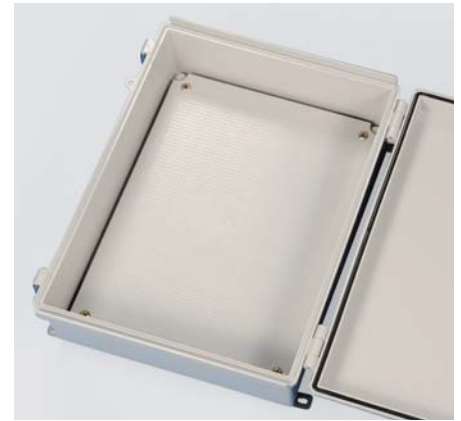
**Product no. / Dimensions**

| Product no. | W   | D   | a   | b   | Suitable box                                  | Weight (g) |
|-------------|-----|-----|-----|-----|---|------------|
| BMP0912Z    | 58  | 88  | —   | 69  | BCAP • R, BCPC • K • R 091207, 091208         | 53         |
| BMP0813Z    | 68  | 118 | —   | 99  | BCAP • R, BCPC • K • R 101507, 101508         | 87         |
| BMP1121Z    | 77  | 177 | —   | 158 | BCAP • R, BCPC • K • R 112107, 112110         | 159        |
| BMP1126Z    | 77  | 227 | —   | 208 | BCAP • R, BCPC • K • R 112607, 112610         | 210        |
| BMP1315Z    | 102 | 122 | —   | 110 | BCAP • R, BCPC • K • R 131508                 | 141        |
| BMP1217Z    | 102 | 152 | —   | 140 | BCAP • R, BCPC • K • R 131808, 131810         | 180        |
| BMP1515Z    | 121 | 121 | —   | 110 | BCAP BCPC • K 151509, 151512                  | 172        |
| BMP1520Z    | 126 | 176 | —   | 160 | BCAP • R, BCPC • K • R 162110, 162113         | 262        |
| BMP1525Z    | 127 | 227 | —   | 210 | BCAP • R, BCPC • K • R 162610, 162613         | 346        |
| BMP1722Z    | 137 | 187 | —   | 160 | BCAP • R, BCPC • K • R 172211                 | 308        |
| BMP1727Z    | 137 | 237 | —   | 210 | BCAP • R, BCPC • K • R 172711                 | 391        |
| BMP1928Z    | 157 | 247 | 120 | 210 | BCAP • R, BCPC • K • R 192810, 192814         | 462.5      |
| BMP2020Z    | 176 | 176 | 120 | 150 | BCAP • R, BCPC • K • R 212110, 212113         | 371        |
| BMP2030Z    | 165 | 265 | 129 | 226 | BCAP • R, BCPC • K • R 203013, 203015, 203018 | 519        |
| BMP2535Z    | 215 | 315 | 180 | 270 | BCAP • R, BCPC • K • R 253515, 253518         | 816        |
| BMP2828Z    | 246 | 246 | 210 | 210 | BCAP • R, BCPC • K • R 282813                 | 727.5      |
| BMP2838Z    | 246 | 346 | 210 | 310 | BCAP • R, BCPC • K • R 283813                 | 1,018      |
| BMP3030Z    | 264 | 264 | 219 | 219 | BCAP • R, BCPC • K • R 303015, 303018         | 826.5      |
| BMP3040Z    | 265 | 365 | 228 | 325 | BCAP • R, BCPC • K • R 304012, 304015, 304018 | 1,154      |
| BMP3535Z    | 315 | 315 | 270 | 270 | BCAP • R, BCPC • K • R 353515, 353518         | 1,196.5    |
| BMP3545Z    | 301 | 401 | 274 | 365 | BCAP • R, BCPC • K • R 354512, 354516, 354520 | 1,443      |
| BMP4050Z    | 354 | 454 | 328 | 428 | BCAP BCPC • K 405016, 405020                  | 1,998      |
| BMP4060Z    | 354 | 551 | 328 | 525 | BCAP BCPC • K 406018, 406023                  | 2,328      |
| BMP5060Z    | 474 | 574 | 426 | 526 | BCAP • R, BCPC • K • R 506018, 506025         | 3,286      |
| BMP5070Z    | 472 | 672 | 426 | 626 | BCAP • R, BCPC • K • R 507018, 507025         | 3,864      |
| BMP6080Z    | 565 | 765 | 526 | 726 | BCAP • R, BCPC • K • R 608018, 608028         | 5,288.5    |

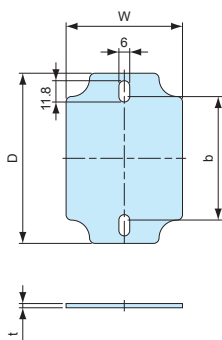
■ K = BCPK series / R = BCAR • BCPR series

**BMP-P SERIES****PLASTIC MOUNTING PLATE**

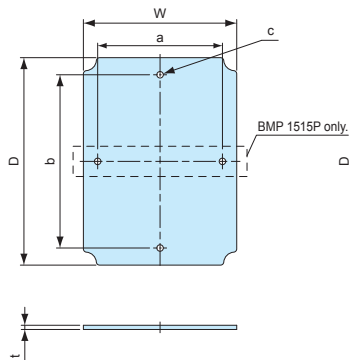
- Lightweight ABS plastic mounting plate.
- Flat plate: BMP0811P ~ BMP1515P  
Ribbed plate: BMP1520P ~ BMP4050P
- DXF/DWG/PDF drawings available on our website.



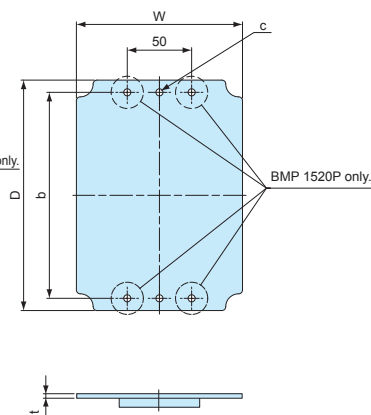
BMP0811P (Flat)



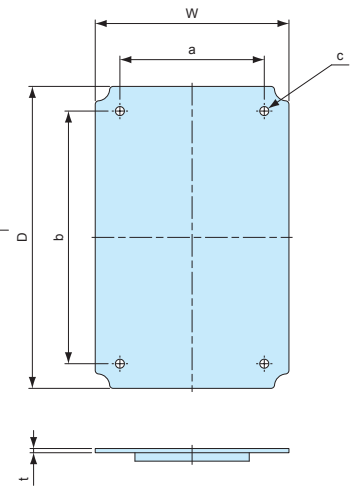
BMP0813P, 1515P (Flat)



BMP1520P, 1525P (Ribbed)



BMP1928P ~ 4050P (Ribbed)

**Components**

| Part name      | Material | Color      |
|----------------|----------|------------|
| Mounting plate | ABS      | White gray |

**Product no. / Dimensions**

| Product no. | W     | D     | a     | b     | t   | c (Φ) | Suitable box                                  | Weight (g) |
|-------------|-------|-------|-------|-------|-----|-------|---|------------|
| BMP0811P    | 64.5  | 94.3  | —     | 68.4  | 3.5 | —     | BCAP • R, BCPC • K • R 091207, 091208         | 21         |
| BMP0813P    | 64.5  | 114.5 | —     | 99    | 3   | Φ6    | BCAP • R, BCPC • K • R 101507, 101508         | 24         |
| BMP1121P    | 76.5  | 176   | —     | 158   | 3   | Φ6    | BCAP • R, BCPC • K • R 112107, 112110         | 40         |
| BMP1126P    | 76.5  | 226   | —     | 208   | 3   | Φ6    | BCAP • R, BCPC • K • R 112607, 112610         | 53         |
| BMP1315P    | 101.5 | 121.5 | —     | 110   | 3.5 | Φ5.5  | BCAP • R, BCPC • K • R 131508                 | 36         |
| BMP1217P    | 109.5 | 160   | —     | 140   | 4   | Φ6    | BCAP • R, BCPC • K • R 131808, 131810         | 62         |
| BMP1515P    | 123   | 123   | 110   | 110   | 3.5 | Φ6    | BCAP BCPC • K 151509, 151512                  | 52         |
| BMP1520P    | 129   | 179   | —     | 160   | 3.5 | Φ5.5  | BCAP • R, BCPC • K • R 162110, 162113, 172211 | 92         |
| BMP1525P    | 129   | 228.5 | —     | 210   | 3.5 | Φ6    | BCAP • R, BCPC • K • R 162610, 162613, 172711 | 112        |
| BMP1928P    | 158.5 | 248   | 120   | 210   | 3.5 | Φ8    | BCAP • R, BCPC • K • R 192810, 192814         | 162        |
| BMP2020P    | 178.5 | 178.5 | 120   | 150   | 3.5 | Φ5.5  | BCAP • R, BCPC • K • R 212110, 212113         | 125        |
| BMP2030P    | 166.5 | 266   | 128   | 225.5 | 4   | Φ8    | BCAP • R, BCPC • K • R 203013, 203015, 203018 | 188        |
| BMP2535P    | 215.5 | 315   | 180   | 268.5 | 4   | Φ8    | BCAP • R, BCPC • K • R 253515, 253518         | 292        |
| BMP2828P    | 248.5 | 248.5 | 210   | 210   | 4   | Φ8    | BCAP • R, BCPC • K • R 282813                 | 237        |
| BMP2838P    | 248   | 347.5 | 209   | 309.5 | 4   | Φ8    | BCAP • R, BCPC • K • R 283813                 | 368        |
| BMP3030P    | 262.5 | 262.5 | 219   | 219   | 4   | Φ7.5  | BCAP • R, BCPC • K • R 303015, 303018         | 281        |
| BMP3040P    | 264.5 | 364   | 227   | 323   | 4   | Φ8    | BCAP • R, BCPC • K • R 304012, 304015, 304018 | 437        |
| BMP3535P    | 313.5 | 313.5 | 269.5 | 269.5 | 4   | Φ8    | BCAP • R, BCPC • K • R 353515, 353518         | 424.5      |
| BMP3545P    | 305   | 405.5 | 273   | 364   | 4   | Φ8    | BCAP • R, BCPC • K • R 354512, 354516, 354520 | 539        |
| BMP4050P    | 357   | 457   | 328   | 428   | 4   | Φ8.5  | BCAP BCPC • K 405016, 405020                  | 725.5      |

■ K = BCPK series / R = BCAR • BCPR series



TAKACHI ELECTRONICS ENCLOSURE CO., LTD.

3-21-16 Higashi-ryoke, Kawaguchi-shi, Saitama, 332-0003 JAPAN

Tel. +81-48-222-5409 / Fax. +81-48-222-7652

November 11, 2019

## Notice

### BMP-P series Plastic Mounting Plate Changes to Underside (bottom) Shape

#### ■ Affected models

| Product Number | Status                          |
|----------------|---------------------------------|
| BMP0811P       | Pending (est. 2nd Quarter 2020) |
| BMP0818P       | Pending (est. 2nd Quarter 2020) |
| BMP1126P       | Pending (est. 3rd Quarter 2020) |
| BMP1212P       | Pending (est. 2nd Quarter 2020) |
| BMP1217P       | Changed                         |

#### ■ Changes : Underside shape/construction

Current shape



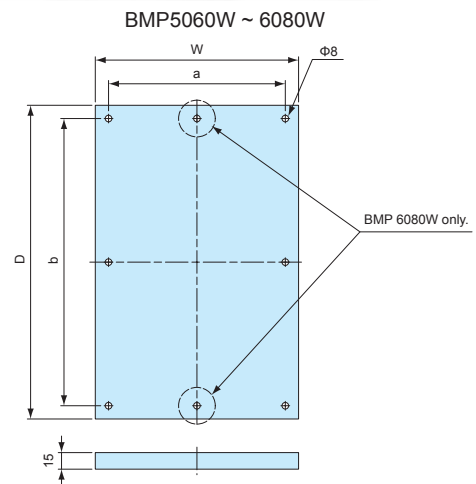
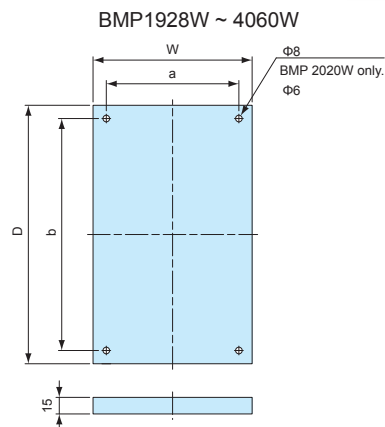
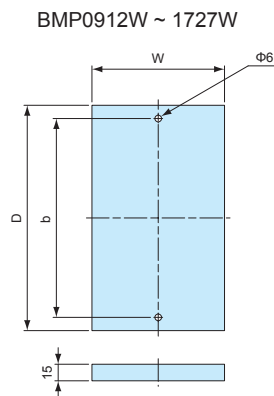
New shape



- Purpose : For the reinforcement and strengthening of small-sized plastic mounting plate(s).
- Effective date : Once present stock has run out.
- Note : There will be no changes to product number, color, or pricing.

**BMP-W SERIES****WOODEN MOUNTING PLATE**

- Easy installation with tapping screws.
- Easily customizable hard wooden plate.
- Plate comes with scales printed on for easy references.
- DXF/DWG/PDF drawings available on our website.

**Components**

| Part name      | Pcs   | Material        | Color / Finish     |
|----------------|-------|-----------------|--------------------|
| Mounting plate | 1     | Wood board t=15 | Scaled sheet       |
| Screw          | 2 ~ 8 | Steel           | Trivalent chromate |

**Product no. / Dimensions**

| Product no. | W   | D   | a   | b   | Suitable box                                  | Screw            | Weight (g) |
|-------------|-----|-----|-----|-----|---|------------------|------------|
| BMP0912W    | 58  | 92  | -   | 69  | BCAP • R, BCPC • K • R 091207, 091208         | M4-20 × 2 pcs    | 62         |
| BMP0813W    | 68  | 122 | -   | 99  | BCAP • R, BCPC • K • R 101507, 101508         | M4-20 × 2 pcs    | 94         |
| BMP1121W    | 77  | 181 | -   | 158 | BCAP • R, BCPC • K • R 112107, 112110         | M4-20 × 2 pcs    | 166        |
| BMP1126W    | 77  | 231 | -   | 208 | BCAP • R, BCPC • K • R 112607, 112610         | M4-20 × 2 pcs    | 191        |
| BMP1315W    | 102 | 126 | -   | 110 | BCAP • R, BCPC • K • R 131508                 | M4-20 × 2 pcs    | 127        |
| BMP1217W    | 102 | 156 | -   | 140 | BCAP • R, BCPC • K • R 131808, 131810         | M4-20 × 2 pcs    | 190        |
| BMP1515W    | 118 | 125 | -   | 110 | BCAP BCPC • K 151509, 151512                  | M4-20 × 2 pcs    | 172        |
| BMP1520W    | 126 | 180 | -   | 160 | BCAP • R, BCPC • K • R 162110, 162113         | M4-20 × 2 pcs    | 243        |
| BMP1525W    | 127 | 231 | -   | 210 | BCAP • R, BCPC • K • R 162610, 162613         | M4-20 × 2 pcs    | 352        |
| BMP1722W    | 137 | 191 | -   | 160 | BCAP • R, BCPC • K • R 172211                 | M4-20 × 2 pcs    | 286        |
| BMP1727W    | 137 | 241 | -   | 210 | BCAP • R, BCPC • K • R 172711                 | M4-20 × 2 pcs    | 212        |
| BMP1928W    | 150 | 240 | 120 | 210 | BCAP • R, BCPC • K • R 192810, 192814         | M5-20 × 4 pcs    | 350        |
| BMP2020W    | 170 | 174 | 120 | 150 | BCAP • R, BCPC • K • R 212110, 212113         | M4-20 × 4 pcs    | 336        |
| BMP2030W    | 159 | 256 | 129 | 226 | BCAP • R, BCPC • K • R 203013, 203015, 203018 | M5-20 × 4 pcs    | 482        |
| BMP2535W    | 210 | 300 | 180 | 270 | BCAP • R, BCPC • K • R 253515, 253518         | M5-20 × 4 pcs    | 688        |
| BMP2828W    | 240 | 240 | 210 | 210 | BCAP • R, BCPC • K • R 282813                 | M5-20 × 4 pcs    | 565        |
| BMP2838W    | 240 | 340 | 210 | 310 | BCAP • R, BCPC • K • R 283813                 | M5-20 × 4 pcs    | 893        |
| BMP3030W    | 249 | 249 | 219 | 219 | BCAP • R, BCPC • K • R 303015, 303018         | M5-20 × 4 pcs    | 659        |
| BMP3040W    | 258 | 355 | 228 | 324 | BCAP • R, BCPC • K • R 304012, 304015, 304018 | M5-20 × 4 pcs    | 965        |
| BMP3535W    | 300 | 300 | 270 | 270 | BCAP • R, BCPC • K • R 353515, 353518         | M5-20 × 4 pcs    | 964        |
| BMP3545W    | 301 | 395 | 274 | 365 | BCAP • R, BCPC • K • R 354512, 354516, 354520 | M5-20 × 4 pcs    | 1,314      |
| BMP4050W    | 355 | 455 | 328 | 428 | BCAP BCPC • K 405016, 405020                  | M5-20 × 4 pcs    | 1,754      |
| BMP4060W    | 355 | 552 | 328 | 525 | BCAP BCPC • K 406018, 406023                  | M5-20 × 4 pcs    | 2,015.5    |
| BMP5060W    | 456 | 556 | 426 | 526 | BCAP • R, BCPC • K • R 506018, 506025         | M5-20 × 6 pcs    | 2,650      |
| BMP5070W    | 456 | 656 | 426 | 626 | BCAP • R, BCPC • K • R 507018, 507025         | M5-20 × 6 pcs    | 3,152.5    |
| BMP6080W    | 556 | 756 | 526 | 726 | BCAP • R, BCPC • K • R 608018, 608028         | M5/M6-20 × 8 pcs | 4,434      |

■ K = BCPC series / R = BCAR • BCPR series



## BFL SERIES

## PLASTIC MOUNTING BRACKET



Color G

Color S

- 2 different colored type to match box colors.
- Tough and strong glass fiber filled polycarbonate.

## Color Type

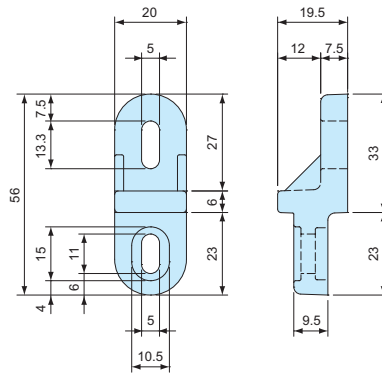
| Color | Color      | Model              |
|-------|------------|--------------------|
| G     | White gray | BCAP • BCAR        |
| S     | Light gray | BCPC • BCPK • BCPR |

## Product no. / Dimensions

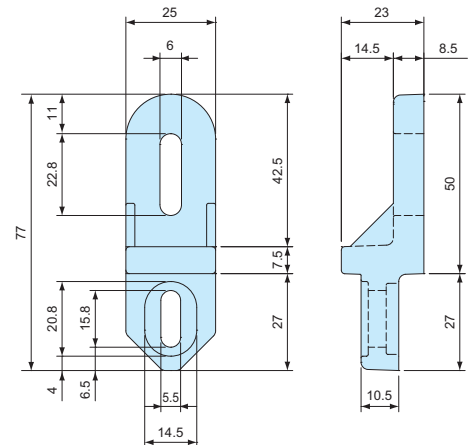
| Product no. | Suitable box  | Screw |
|-------------|---|-------|
| BFL-1□      | BCAP • R, BCPC • K • R 0912, 1015, 1121, 1126, 1315, 1318, 1621, 1626, 1722, 1727, 212113     | M4-12 |
| BFL-2□      | BCAP • R, BCPC • K • R 1928, 2030, 2535, 2828, 2838, 3030, 3040, 3535, 3545, 4050, 4060, 5060 | M5-12 |
| BFL-2-21□   | BCAP • R, BCPC • K • R 212110   | M4-12 |

- Please suffix color code at the end of the product number.
- ※Not suitable for BCAP1515 model. Use CK-35P (Stainless steel) instead.

BFL-1



BFL-2 / BFL-2-21



## Components

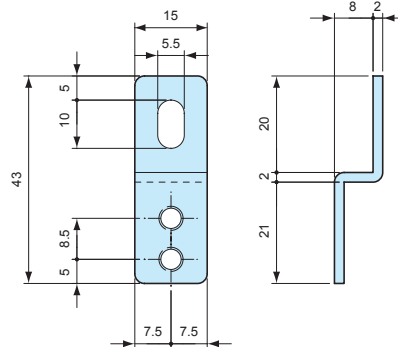
| Part name        | Pcs | Material / Finish                |
|------------------|-----|----------------------------------|
| Mounting bracket | 4   | Glass fiber filled polycarbonate |
| Screw            | 4   | Stainless steel / Unfinished     |

## CK SERIES

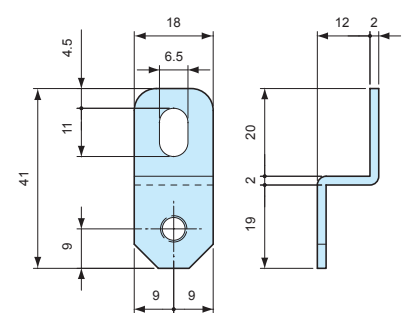
## STAINLESS STEEL MOUNTING BRACKET



CK-35P



CK-26P



## Components

| Part name        | Pcs | Material        | Finish        |
|------------------|-----|-----------------|---------------|
| Mounting bracket | 4   | Stainless steel | Barrel finish |
| Screw            | 4   | Stainless steel | Unfinished    |

## Product no. / Dimensions

| Product no. | Suitable box  | Screw |
|-------------|---|-------|
| CK-35P      | BCAP • R, BCPC • K • R 0912, 1015, 1121, 1126, 1315, 1318, 1515, 1621, 1626, 1722, 1727, 2121 | M4-10 |
| CK-26P      | BCAP • R, BCPC • K • R 1928, 2030, 2535, 2828, 2838, 3030, 3040, 3535, 3545, 4050, 4060       | M5-10 |

## MT SERIES

## PCB MOUNTING SCREW

- PCB mounting screws for inner bosses of BCAP • BCAR • BCPC • BCPK • BCPR series.

## Product no. / Dimensions

| Product no. | Material | Finish             | Pack of |
|-------------|----------|--------------------|---------|
| MT4-8T      | Steel M4 | Trivalent chromate | 20      |
| MT5-8T      | Steel M5 | Trivalent chromate | 20      |

## Suitable Box

| Product no. | Suitable box  | Weight                |
|-------------|---|-----------------------|
| MT4-8T      | BCAP • R, BCPC • K • R 0912, 1015, 1121, 1126, 1315, 1318, 1515, 1621, 1626, 1722, 1727, 1928, 2121 | 7kgf • cm (0.7N • m)  |
| MT5-8T      | BCAP • R, BCPC • K • R 2030, 2535, 2828, 2838, 3030, 3040, 3535, 3545, 4050, 4060, 5060, 5070, 6080 | 14kgf • cm (1.4N • m) |



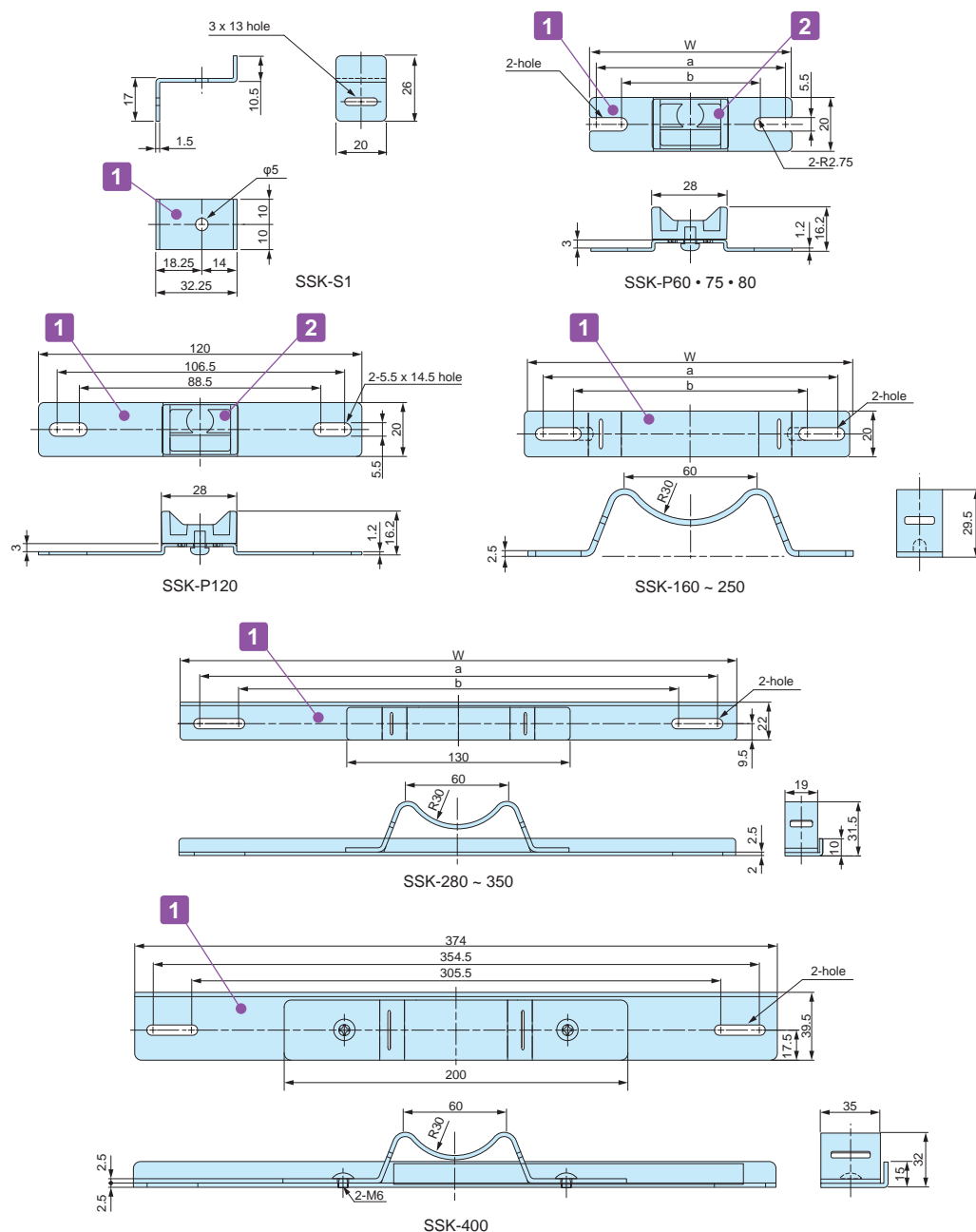
## SSK SERIES

## POLE MOUNTING BRACKET



- Stainless steel pole mounting bracket for BCAP • BCAR and BCPC • BCPK • BCPR series.
- No hole milling is required for maintaining the IP rating of the enclosure.
- Use PKB mounting belt to install onto a pole (See page 258 for PKB series).
- DXF/DWG/PDF drawings available on our website.

## SSK dimensions



## APPLICATION EXAMPLE

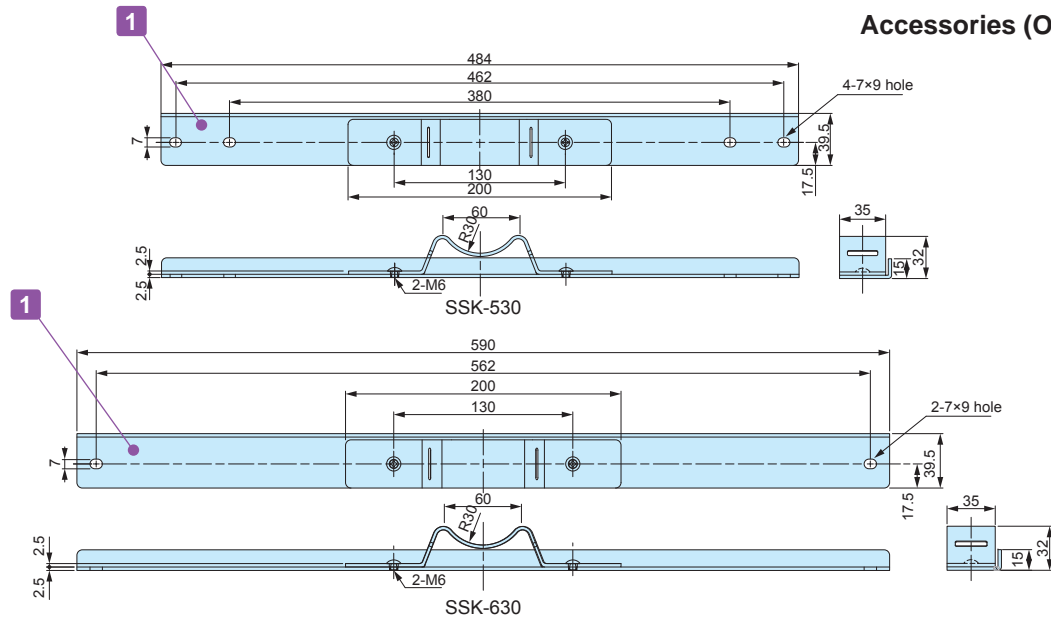


**WEATHER STATION DATA LOGGER**  
Product by Sakaki Corporation (Japan)



**WATER LEVEL DETECTOR**  
Product by Aspect System (Japan)

## Accessories (Optional parts)



## Components

| No. | Part name                         | Pcs   | Material               | Color / Finish       |
|-----|-----------------------------------|-------|------------------------|----------------------|
| 1   | Bracket                           | 2 / 4 | Stainless Steel SUS304 | Barrel finish        |
| 2   | Plastic bracket (SSK-P type only) | 2     | ASA UL94HB             | White gray (RAL7035) |
| -   | Screw                             | 4     | Stainless Steel SUS304 | Unfinished           |

## Product no. / Dimensions

| Product no. | W     | a     | b     | c        | Box size   | Belt to use with | Pack of |
|-------------|-------|-------|-------|----------|--|------------------|---------|
| SSK-S1      | 32.25 | 18.25 | 14    | -        | 0912, 1015, 1121, 1126, 1315, 1318, 1621, 1626, 1722, 1727, 2121 | PKB-10P, PKB-10S | 4       |
| SSK-P60     | 60    | 54.5  | 46.5  | 5.5×9    | 0912   | PKB-10P, PKB-10S | 2       |
| SSK-P75     | 75    | 69.5  | 53.5  | 5.5×12.5 | 1015   | PKB-10P, PKB-10S | 2       |
| SSK-P80     | 80    | 74.5  | 64.5  | 5.5×10.5 | 1121, 1126   | PKB-10P, PKB-10S | 2       |
| SSK-P120    | 120   | 106.5 | 88.5  | 5.5×14.5 | 1315, 1318   | PKB-10P, PKB-10S | 2       |
| SSK-160     | 142   | 129.5 | 101   | -        | 1515, 1621, 1626   | PKB-10P, PKB-10S | 2       |
| SSK-170     | 152   | 142.3 | 101   | -        | 1722, 1727   | PKB-10P, PKB-10S | 2       |
| SSK-200     | 174   | 161.5 | 112.5 | -        | 1928, 2030   | PKB-10P, PKB-10S | 2       |
| SSK-210     | 192   | 180.5 | 131.5 | -        | 2121   | PKB-10P, PKB-10S | 2       |
| SSK-250     | 230   | 215.5 | 166.5 | -        | 2535   | PKB-10P, PKB-10S | 2       |
| SSK-280     | 260   | 244.5 | 195.5 | -        | 2828, 2838   | PKB-10P, PKB-10S | 2       |
| SSK-300     | 280   | 264.5 | 215.5 | -        | 3030, 3040   | PKB-10P, PKB-10S | 2       |
| SSK-350     | 324   | 302.5 | 253.5 | -        | 3535, 3545   | PKB-10P, PKB-10S | 2       |
| SSK-400     | 374   | 354.5 | 305.5 | -        | 4050, 4060   | PKB-20S          | 2       |
| SSK-530     | 484   | 462   | 380   | 7×9      | 5060, 5070   | PKB-20S          | 2       |
| SSK-630     | 590   | 562   | -     | 7×9      | 6080   | PKB-20S          | 2       |

## PKB SERIES

## POLE MOUNTING BELT



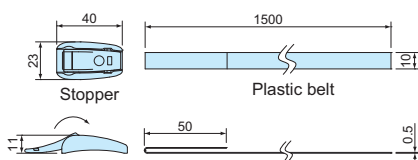
PKB-10P



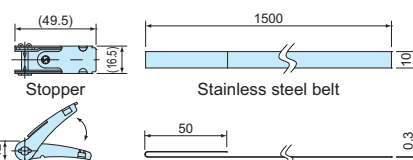
PKB-10S, 20S

- Universal pole mounting belt for various types of enclosures / box.
- Strong clamping stainless steel type and easy installation plastic type are available.
- Use SSK mounting bracket to install onto a pole.
- Designed for one time use only (not reusable).
- DXF/DWG/PDF drawings available on our website.

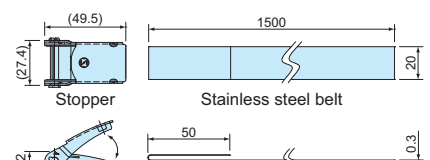
PKB-10P



PKB-10S



PKB-20S



## Components

| Part name | Pcs | Material                     | Color / Finish                |
|-----------|-----|------------------------------|-------------------------------|
| Stopper   | 2   | POM • Stainless steel SUS304 | Black • Barrel finish         |
| Belt      | 2   | PET • Stainless steel SUS430 | Gray • Bright annealed finish |

## Product no. / Dimensions

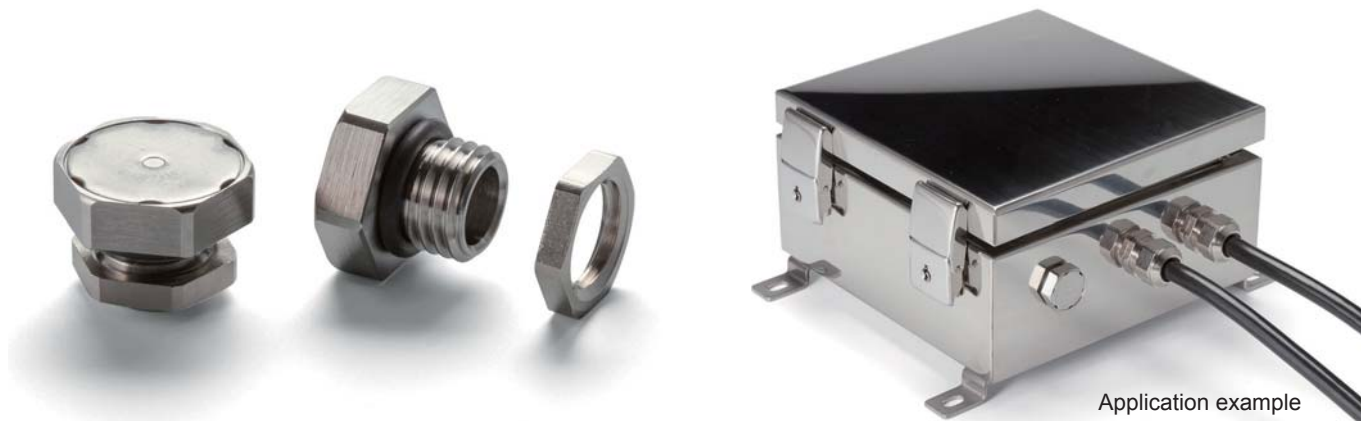
| Product no. | Tensile strength (horizontal) | Belt material   | Belt length | Weight (g) | Pack of |
|-------------|-------------------------------|-----------------|-------------|------------|---------|
| PKB-10P     | 1.3kN                         | PET             | 1,500mm     | 31.8       | 2       |
| PKB-10S     | 1.4kN                         | Stainless steel | 1,500mm     | 101.6      | 2       |
| PKB-20S     | 2.9kN                         | Stainless steel | 1,500mm     | 182.2      | 2       |

## PMF-12M

## STAINLESS STEEL PROTECTIVE VENT

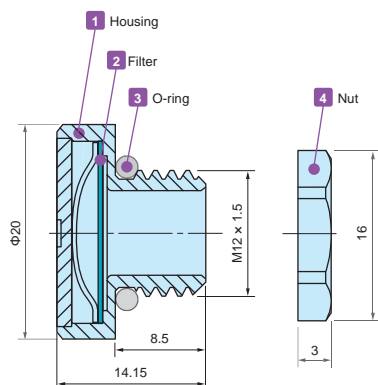
★ ★ NEW

IP68 IP69K

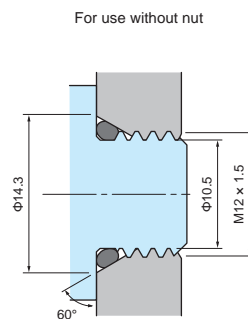


- Stainless steel protective vent for superior durability and chemical resistance.
- IP68 protection class (water depth 2 meters / 60 mins) and  $-40^{\circ}\text{C} \sim +125^{\circ}\text{C}$  operating temperature range allows it to be used in various environments.
- Suitable for enclosures with capacities of 20 liters or under.
- For outdoor use, installation on the side of the enclosure unit is recommended.

## PMF-12M dimensions

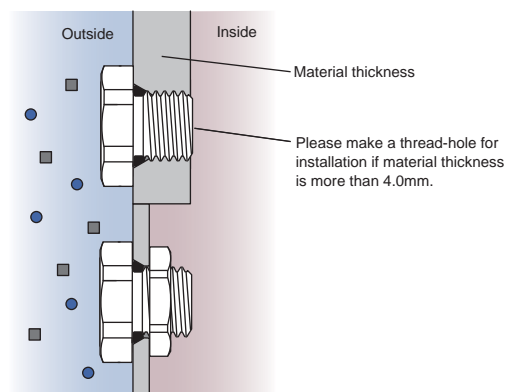


## Hole milling drawings



- While  $\Phi 12.2\text{mm}$  through-hole is sufficient for installation, 60° angle tapered hole is recommended to prevent deformation of the O-ring.

## Installation drawings



- If used with a lock nut, material thickness should not exceed 4.0mm.

## Technical Data

|                    |  |
|--------------------|--|
| Airflow            | 1600ml / min (dp = 7 kPa)  |
| Recommended Torque | 0.6 ~ 1.2 N · m  |
| Certifications     | IEC60529 (Protection class test) : IP66 • IP67 • IP68 • IP69K<br>IEC60068-2-1, 2, 14 (Heat resistance test) : $-40^{\circ}\text{C} \sim +125^{\circ}\text{C}$<br>IEC60068-2-78 (Humidity test) : $85^{\circ}\text{C} \cdot 85\%$ humidity • 1000 hours<br>IEC60068-2-64 (Vibration test) |

## Product no. / Dimensions

| Product no. | Material        |          |          |                       | G           |             | Nut SW |
|-------------|-----------------|----------|----------|-----------------------|-------------|-------------|--------|
| ● Metallic  | 1 Housing       | 2 Filter | 3 O-ring | 4 Nut                 | Thread size | Mount hole  |        |
| PMF-12M     | Stainless steel | PTFE     | Silicone | Brass • Nickel plated | M12 x 1.5   | $\Phi 12.2$ | 15     |



## PMF SERIES

## PROTECTIVE VENT

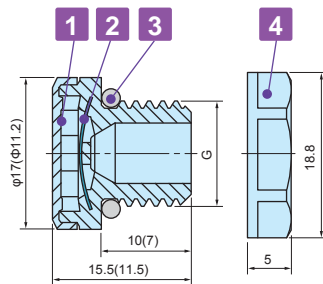


Application example

- Protective vents prevents the ingress of a variety of contaminants, such as water, dust and other particules while allowing water vapor molecules to diffuse through the microporous membrane.
- Equalize pressure and reduce condensation by allowing airflow into and out of sealed enclosures.
- With an IP68 protection class (water depth 2 meters / 60 mins) and -40°C ~ +125°C operating temperature range, it can be used in harsh environmental conditions.
- PMF-6B works up to 2 liters capacity enclosures. Whereas, PMF-12 models work for up to 5 liters and PMF-12HS models work for up to 50 liters.
- For outdoor use, more efficient to install on the side(s).
- Recommended to use for industrial, electric, electronics purpose only.

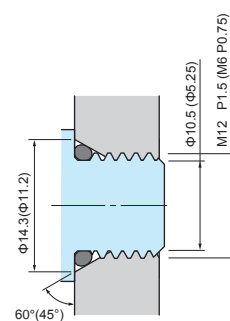
## PMF dimensions

- Drawings below are reference examples only.  
DXF/DWG/PDF drawings available on our website.



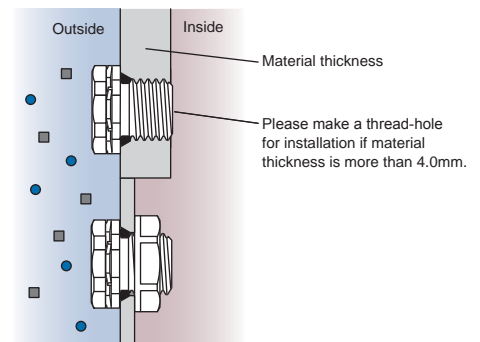
( ) values are for PMF-6B.  
Lock nut is not available for PMF-6B.

## Hole milling drawings



- While  $\Phi 12.2\text{mm}$  through-hole is sufficient for installation,  $60^\circ$  angle tapered hole is recommended to prevent deformation of the O-ring.

## Installation drawings



- If used with a lock nut, material thickness should not exceed 4.0mm, and  $\Phi 12.2\text{mm}$  through-hole is sufficient.

## Technical Data

| Product no.        | PMF-6B   | PMF-12                   | PMF-12HA                  |
|--------------------|--|--------------------------|---------------------------|
| Airflow            | 300ml / min (dp = 7 kPa)   | 450ml / min (dp = 7 kPa) | 4000ml / min (dp = 7 kPa) |
| Recommended Torque | 0.2 ~ 0.4 N · m  | 0.6 ~ 0.8 N · m          | 0.6 ~ 0.8 N · m           |
| Certifications     | IEC60529 (Protection class test): IP66 • IP67 • IP68 • IP69K (Not for PMF-6B)<br>IEC60068-2-1, 2, 14 (Heat resistance test): -40°C ~ +125°C (~+150°C for PMF-6B)<br>IEC60068-2-78 (Humidity test): 85°C • 85% humidity • 1000 hours<br>IEC60068-2-64 (Vibration test) (PMF-6B only)<br>UL94V-0 (Flame-resistant) • UL746C f1 |                          |                           |

## Product no. / Dimensions

| Product no.  |                   | Material                 |          |          |               | G           |             | Nut SW |
|--------------|-------------------|--------------------------|----------|----------|---------------|-------------|-------------|--------|
| ● Light gray | ● Black           | 1 Housing                | 2 Filter | 3 O-ring | 4 Lock nut    | Thread size | Mount hole  |        |
| —            | <b>NEW</b> PMF-6B | PA6 (Body)<br>PA66 (Cap) | PTFE     | Silicone | n/a           | M6 x 0.75   | —           | —      |
| PMF-12S      | PMF-12B           | PA6                      | PTFE     | Silicone | PA6 (UL94V-2) | M12 x 1.5   | $\Phi 12.2$ | 17     |
| PMF-12HAS    | PMF-12HAB         | PA6                      | PTFE     | Silicone | PA6 (UL94V-2) | M12 x 1.5   | $\Phi 12.2$ | 17     |

## PMF-32 SERIES

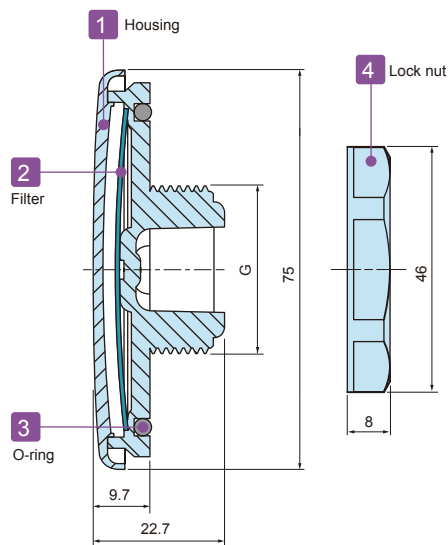
## LARGE PROTECTIVE VENT



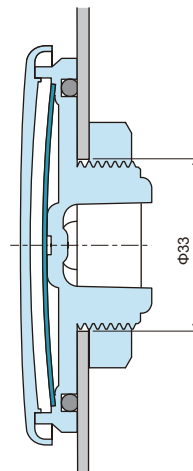
Application example

- Maintaining high airflow for large enclosures in an outdoor environment.
- Equalize pressure and reduce condensation by allowing airflow into and out of sealed enclosures.
- Simple and flat design allows it to be used on a wide variety of enclosure types.
- IP68 protection class rated with an operating temperature range of -40°C ~ +125°C allows it to be used in harsh environments.
- Compliant with Solar industry testing IEC62108 standards.
- For superior performance, installation on the side of the enclosure is recommended.

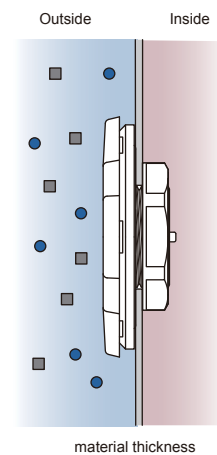
## PMF-32 Dimensions



## Hole milling drawings



## Installation drawings



- If used with a lock nut, material thickness should not exceed 5.0mm.

## Technical Data

|                              |   |
|------------------------------|---|
| Airflow                      | 16 ℓ / min (dp = 12 mbar)   |
| Recommended torque           | 5 N • m   |
| Certifications (without nut) | IEC529, 2nd (Protection class test): IP66 • IP67 • IP68 • IP69K<br>IEC60068-2-1, 2, 14 (Heat resistance test): - 40°C ~ +125°C<br>IEC60068-2-78 (Humidity test): 85°C • 85% humidity • 1000 hours<br>IEC62108.10.8 • 9 (Solar industry test): Freezing - high temperature test • Hail impact test<br>UL94V-0 (Flame-resistant) • UL746C |

## Product no. / Dimensions

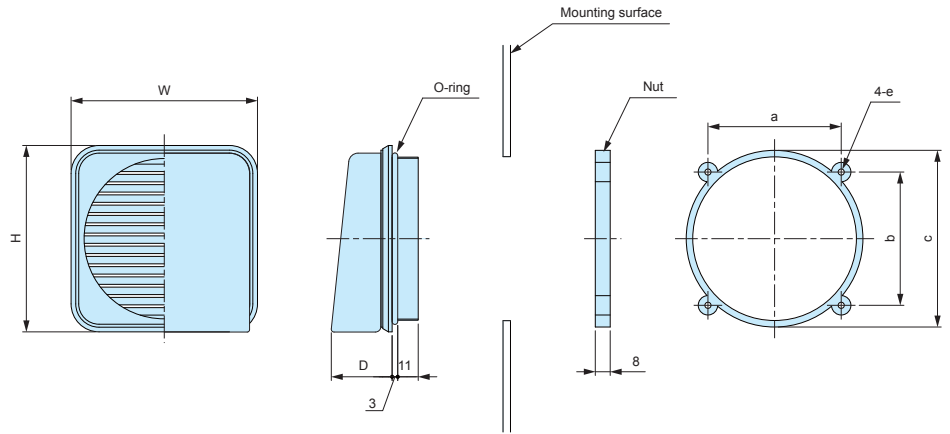
| Product no. | Material  |          |          |            | G           |            | Nut SW |
|-------------|-----------|----------|----------|------------|-------------|------------|--------|
|             | 1 Housing | 2 Filter | 3 O-ring | 4 Lock nut | Thread size | Mount hole |        |
| PMF-32S     | PC        | PTFE     | Silicone | PA6        | M32×1.5     | Φ33        | 41.5   |

V SERIES

VENTILATION LOUVER



- Recommended for condensation prevention and heat dissipation.
- 2 models available: ABS V60, V80 for BCAP and BCAR series, and PC V60S, V80S for BCPC, BCPK and BCAR series.
- Suitable to be used on a variety of enclosure types, series and models.



Product no. / Dimensions

| Product no. | Material      | Color      | Installation hole | W    | H    | D    | a    | b    | c    | e    |
|-------------|---------------|------------|-------------------|------|------|------|------|------|------|------|
| V60         | ABS           | White gray | Φ63               | 74.5 | 74.5 | 30.8 | 50.5 | 50.5 | 70   | Φ3.8 |
| V80         | ABS           | White gray | Φ88               | 100  | 100  | 36   | 71.5 | 71.5 | 94.8 | Φ3.3 |
| V60S        | Polycarbonate | Light gray | Φ63               | 74.5 | 74.5 | 30.8 | 50.5 | 50.5 | 70   | Φ3.8 |
| V80S        | Polycarbonate | Light gray | Φ88               | 100  | 100  | 36   | 71.5 | 71.5 | 94.8 | Φ3.3 |

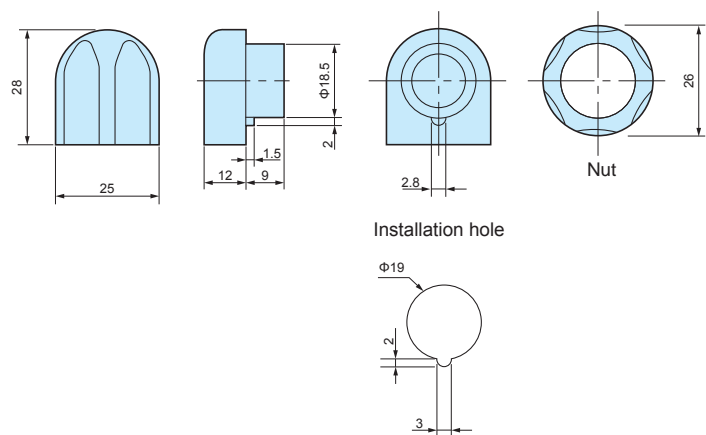
■ O-ring material: NBR Black

VF SERIES

VENTILATION PARTS



VF-1



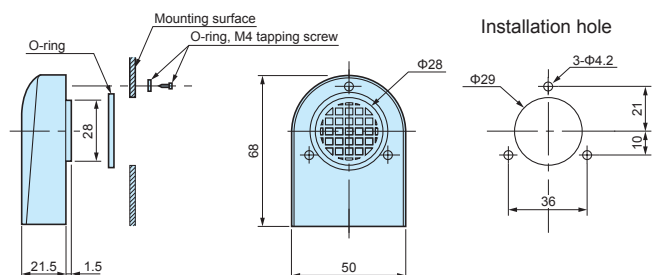
Technical Data

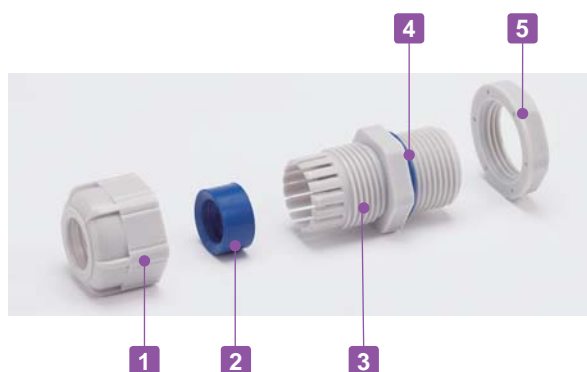
|                   |      |      |
|-------------------|------|------|
| Protection class: | VF-1 | IP33 |
|                   | VF-2 | IP24 |

Product no.

| Product no. | Material / Color       |
|-------------|------------------------|
| VF-1        | Polyamide / White gray |
| VF-2        | Polyamide / White gray |

VF-2





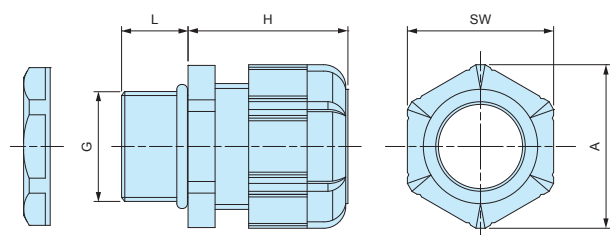
- Weatherproof cable gland equipped with high ultraviolet and degradation resistant silicone sealing insert and O-ring.
- Recommended to use outdoors where waterproofing is critical.

## Components

■ PA = Polyamide

| No. | Part name      | Material     |
|-----|----------------|--------------|
| 1   | Cap            | PA66 UL94V-2 |
| 2   | Sealing insert | Silicone     |
| 3   | Connector      | PA66 UL94V-2 |
| 4   | O-ring         | Silicone     |
| 5   | Nut            | PA66 UL94V-2 |

## RMW dimensions



## Technical Data

Protection class: IP67  
Operating temperature: -20°C ~ +80°C

- DXF/DWG/PDF drawings available on our website.
- Lock nut is not included for RMW10S-6.  
Please drill a proper thread hole into the enclosure for installation.

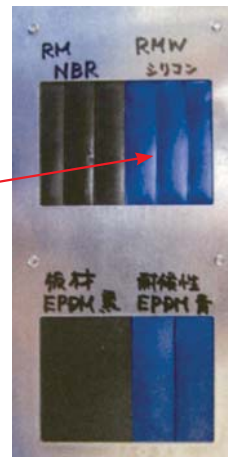
## Product no. / Dimensions

| Product no.  |              | G           |               | Cable range |     | L    | H Max | SW   | A    | Pack of |
|--------------|--------------|-------------|---------------|-------------|-----|------|-------|------|------|---------|
| ● Black      | ● Light gray | Thread size | Mounting hole | Min         | Max |      |       |      |      |         |
| RMW8L-2.5B   | RMW8L-2.5S   | M8×1.25     | Φ8.2          | 1           | 2.5 | 13   | 19.5  | 11.8 | 13.5 | 1       |
| RMW8L-4B     | RMW8L-4S     | M8×1.25     | Φ8.2          | 2.5         | 4   | 13   | 19.5  | 11.8 | 13.5 | 1       |
| RMW10S-6B    | RMW10S-6S    | M10×1.5     | —             | 3           | 6   | 8    | 20.5  | 13   | 14.4 | 1       |
| RMW10L-6B    | RMW10L-6S    | M10×1.5     | Φ10.2         | 3           | 6   | 13   | 20.5  | 13   | 14.4 | 1       |
| RMW12S-7B    | RMW12S-7S    | M12×1.5     | Φ12.2         | 3.5         | 7   | 9    | 20.5  | 16   | 17.6 | 1       |
| RMW12L-7B    | RMW12L-7S    | M12×1.5     | Φ12.2         | 3.5         | 7   | 14.5 | 20.5  | 16   | 17.7 | 1       |
| RMW16S-8B    | RMW16S-8S    | M16×1.5     | Φ16.2         | 4           | 8   | 9    | 23.5  | 19   | 21   | 1       |
| RMW16L-8B    | RMW16L-8S    | M16×1.5     | Φ16.2         | 4           | 8   | 15   | 24    | 19   | 21   | 1       |
| RMW20S-12B   | RMW20S-12S   | M20×1.5     | Φ20.2         | 6           | 12  | 10   | 29    | 24   | 26.2 | 1       |
| RMW20L-12B   | RMW20L-12S   | M20×1.5     | Φ20.2         | 6           | 12  | 15   | 28.5  | 24   | 26.2 | 1       |
| RMW25L-17B   | RMW25L-17S   | M25×1.5     | Φ25.2         | 11          | 17  | 15   | 35    | 33   | 36.2 | 1       |
| RMW32L-21B   | RMW32L-21S   | M32×1.5     | Φ32.3         | 13          | 21  | 15   | 38    | 36   | 39.5 | 1       |
| RMW40L-27B   | RMW40L-27S   | M40×1.5     | Φ40.3         | 18          | 27  | 18   | 43.5  | 45.7 | 50.5 | 1       |
| RMW50L-38B   | RMW50L-38S   | M50×1.5     | Φ50.4         | 27          | 38  | 20   | 50.5  | 60   | 66.5 | 1       |
| RMW8L-2.5B-P | RMW8L-2.5S-P | M8×1.25     | Φ 8.2         | 1           | 2.5 | 13   | 19.5  | 11.8 | 13.5 | 100     |
| RMW8L-4B-P   | RMW8L-4S-P   | M8×1.25     | Φ 8.2         | 2.5         | 4   | 13   | 19.5  | 11.8 | 13.5 | 100     |
| RMW10L-6B-P  | RMW10L-6S-P  | M10×1.5     | Φ10.2         | 3           | 6   | 13   | 20.5  | 13   | 14.4 | 100     |
| RMW12S-7B-P  | RMW12S-7S-P  | M12×1.5     | Φ12.2         | 3.5         | 7   | 9    | 20.5  | 16   | 17.6 | 100     |
| RMW12L-7B-P  | RMW12L-7S-P  | M12×1.5     | Φ12.2         | 3.5         | 7   | 14.5 | 20.5  | 16   | 17.7 | 100     |
| RMW16S-8B-P  | RMW16S-8S-P  | M16×1.5     | Φ16.2         | 4           | 8   | 9    | 23.5  | 19   | 21   | 100     |
| RMW16L-8B-P  | RMW16L-8S-P  | M16×1.5     | Φ16.2         | 4           | 8   | 15   | 24    | 19   | 21   | 100     |
| RMW20S-12B-P | RMW20S-12S-P | M20×1.5     | Φ20.2         | 6           | 12  | 10   | 29    | 24   | 26.2 | 100     |
| RMW20L-12B-P | RMW20L-12S-P | M20×1.5     | Φ20.2         | 6           | 12  | 15   | 28.5  | 24   | 26.2 | 100     |
| RMW25L-17B-P | RMW25L-17S-P | M25×1.5     | Φ25.2         | 11          | 17  | 15   | 35    | 33   | 36.2 | 100     |



# RMW series silicone sealing insert weatherproof test report

Object: Cut into a piece of the silicone sealing insert from RMW series and attach it onto an aluminium plate.  
For comparison, NBR sealing insert from our RM and EPDM sealing insert from another manufacturer is also attached for comparison purposes.



Before



After

## Testing conditions

**Equipment :** 7.5kW Super Xenon Weather Meter SX75 (Suga Test Instruments Co., Ltd. - <http://www.sugatest.co.jp/english/>)  
**Conditions :** JIS B7754 : 1991

Testing with an authorized Xenon arc lamp weathering test equipment under the conditions denoted below.

Irradiance : 180W/m<sup>2</sup> at 300-400nm

Black Panel Temperature : 63±3°C Humidity Range : 50±10%

Cycle Conditions : 120 minutes cycle (18 minutes irradiation + water spray - 102 minutes irradiation)

2,000 hours (equivalent to a period of 4 years under natural conditions)

**Time period :**

**Total radiant exposure :** 1296MJ/m<sup>2</sup>

## Test result (visual / touch inspection)

**Silicone sealing insert material :** No cracks, no gloss transition, no powder - no appearance change at all. Flexibility remains unchanged.

Before



After



**NBR material from our RM series :** Lost glossiness on the surface and material is stiffened.

Before



After

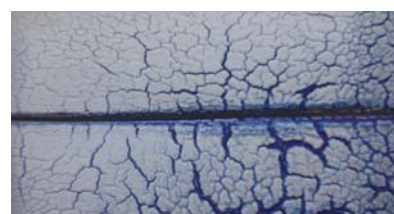


**EPDM material from weatherproof cable gland of another manufacturer :** Cracked, color drastically faded and powder appeared on the surface.

Before

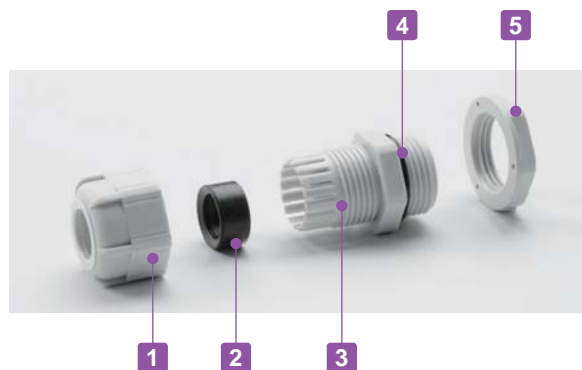


After



## RM SERIES

## POLYAMIDE CABLE GLAND



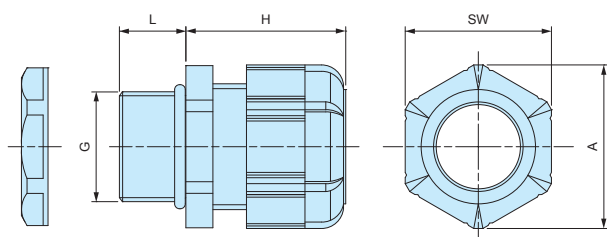
- Low cost cable glands made from polyamide material.
- Wide selection, for M8 ~ M63, suitable for  $\Phi 1\text{mm} \sim \Phi 44\text{ mm}$  cable.
- High oil resistant NBR rubber sealing and O-ring.
- IP67 protection class.

## Components

■ PA = Polyamide

| No. | Part name      | Material     |
|-----|----------------|--------------|
| 1   | Cap            | PA66 UL94V-2 |
| 2   | Sealing insert | NBR          |
| 3   | Connector      | PA66 UL94V-2 |
| 4   | O-ring         | NBR          |
| 5   | Lock nut       | PA66 UL94V-2 |

## RM dimensions



## Technical Data

Protection class: IP67  
Operating temperature:  $-20^{\circ}\text{C} \sim +80^{\circ}\text{C}$

- DXF/DWG/PDF drawings available on our website.
- Lock nut is not included for RM8S-2.5, 8S-4, and 10S-6 models.  
Please drill a proper thread hole into the enclosure for installation.

## Product no. / Dimensions

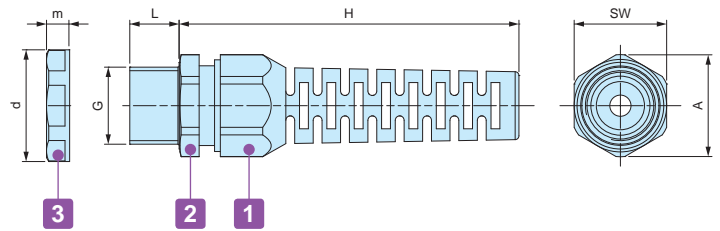
| Product no. |              | G           |               | Cable range |     | L    | H<br>Max | SW   | A    | Pack of |
|-------------|--------------|-------------|---------------|-------------|-----|------|----------|------|------|---------|
| ● Black     | ● Light gray | Thread size | Mounting hole | Min         | Max |      |          |      |      |         |
| RM8S-2.5B   | RM8S-2.5S    | M8×1.25     | —             | 1           | 2.5 | 7.5  | 19.5     | 11.8 | 13.5 | 1       |
| RM8L-2.5B   | RM8L-2.5S    | M8×1.25     | $\Phi 8.2$    | 1           | 2.5 | 13   | 19.5     | 11.8 | 13.5 | 1       |
| RM8S-4B     | RM8S-4S      | M8×1.25     | —             | 2.5         | 4   | 7.5  | 19.5     | 11.8 | 13.5 | 1       |
| RM8L-4B     | RM8L-4S      | M8×1.25     | $\Phi 8.2$    | 2.5         | 4   | 13   | 19.5     | 11.8 | 13.5 | 1       |
| RM10S-6B    | RM10S-6S     | M10×1.5     | —             | 3           | 6   | 8    | 20.5     | 13   | 14.4 | 1       |
| RM10L-6B    | RM10L-6S     | M10×1.5     | $\Phi 10.2$   | 3           | 6   | 13   | 20.5     | 13   | 14.4 | 1       |
| RM12S-7B    | RM12S-7S     | M12×1.5     | $\Phi 12.2$   | 3.5         | 7   | 9    | 20.5     | 16   | 17.6 | 1       |
| RM12L-7B    | RM12L-7S     | M12×1.5     | $\Phi 12.2$   | 3.5         | 7   | 14.5 | 20.5     | 16   | 17.7 | 1       |
| RM16S-8B    | RM16S-8S     | M16×1.5     | $\Phi 16.2$   | 4           | 8   | 9    | 23.5     | 19   | 21   | 1       |
| RM16L-8B    | RM16L-8S     | M16×1.5     | $\Phi 16.2$   | 4           | 8   | 15   | 24       | 19   | 21   | 1       |
| RM20S-12B   | RM20S-12S    | M20×1.5     | $\Phi 20.2$   | 6           | 12  | 10   | 29       | 24   | 26.2 | 1       |
| RM20L-12B   | RM20L-12S    | M20×1.5     | $\Phi 20.2$   | 6           | 12  | 15   | 28.5     | 24   | 26.2 | 1       |
| RM25L-17B   | RM25L-17S    | M25×1.5     | $\Phi 25.2$   | 11          | 17  | 15   | 35       | 33   | 36.2 | 1       |
| RM32L-21B   | RM32L-21S    | M32×1.5     | $\Phi 32.3$   | 13          | 21  | 15   | 38       | 36   | 39.5 | 1       |
| RM40L-27B   | RM40L-27S    | M40×1.5     | $\Phi 40.3$   | 18          | 27  | 18   | 43.5     | 45.7 | 50.5 | 1       |
| RM50L-38B   | RM50L-38S    | M50×1.5     | $\Phi 50.4$   | 27          | 38  | 20   | 50.5     | 60   | 66.5 | 1       |
| RM63L-44B   | RM63L-44S    | M63×1.5     | $\Phi 63.4$   | 37          | 44  | 20   | 53       | 68   | 75.5 | 1       |
| RM8L-2.5B-P | RM8L-2.5S-P  | M8×1.25     | $\Phi 8.2$    | 1           | 2.5 | 13   | 19.5     | 11.8 | 13.5 | 100     |
| RM8L-4B-P   | RM8L-4S-P    | M8×1.25     | $\Phi 8.2$    | 2.5         | 4   | 13   | 19.5     | 11.8 | 13.5 | 100     |
| RM10L-6B-P  | RM10L-6S-P   | M10×1.5     | $\Phi 10.2$   | 3           | 6   | 13   | 20.5     | 13   | 14.4 | 100     |
| RM12S-7B-P  | RM12S-7S-P   | M12×1.5     | $\Phi 12.2$   | 3.5         | 7   | 9    | 20.5     | 16   | 17.6 | 100     |
| RM12L-7B-P  | RM12L-7S-P   | M12×1.5     | $\Phi 12.2$   | 3.5         | 7   | 14.5 | 20.5     | 16   | 17.7 | 100     |
| RM16S-8B-P  | RM16S-8S-P   | M16×1.5     | $\Phi 16.2$   | 4           | 8   | 9    | 23.5     | 19   | 21   | 100     |
| RM16L-8B-P  | RM16L-8S-P   | M16×1.5     | $\Phi 16.2$   | 4           | 8   | 15   | 24       | 19   | 21   | 100     |
| RM20S-12B-P | RM20S-12S-P  | M20×1.5     | $\Phi 20.2$   | 6           | 12  | 10   | 29       | 24   | 26.2 | 100     |
| RM20L-12B-P | RM20L-12S-P  | M20×1.5     | $\Phi 20.2$   | 6           | 12  | 15   | 28.5     | 24   | 26.2 | 100     |
| RM25L-17B-P | RM25L-17S-P  | M25×1.5     | $\Phi 25.2$   | 11          | 17  | 15   | 35       | 33   | 36.2 | 100     |

## AGSP SERIES

## STRAIN RELIEF CABLE GLAND



AGSP dimensions



■ DXF/DWG/PDF drawings available on our website.

## Technical Data

Protection class: IP67  
Temperature range -30°C ~ +100°C  
Compliant with EN50262 Ver.A

## Components

■ PA = Polyamide

| No. | Part name         | Material      |
|-----|-------------------|---------------|
| 1   | Strain relief cap | PA6 (UL94V-2) |
| -   | Sealing insert    | CR            |
| 2   | Connector         | PA6 (UL94V-2) |
| 3   | Lock- nut         | PA6 (UL94V-2) |

## Product no. / Dimensions

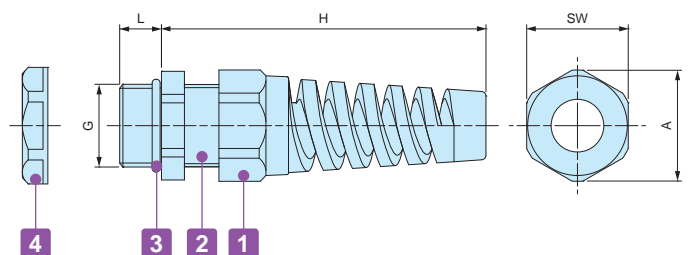
| Product no. |              | G           |               | Cable range |     | L    | H Max | SW | A    | d  | m | Pack of |
|-------------|--------------|-------------|---------------|-------------|-----|------|-------|----|------|----|---|---------|
| ● Black     | ● Light gray | Thread size | Mounting hole | Min         | Max |      |       |    |      |    |   |         |
| AGSP12-6.5B | AGSP12-6.5S  | M12×1.5     | Φ12.2         | 3.5         | 6.5 | 12.5 | 57    | 15 | 16.7 | 19 | 5 | 1       |
| AGSP16-8B   | AGSP16-8S    | M16×1.5     | Φ16.2         | 5           | 8   | 12.4 | 69    | 19 | 21   | 24 | 5 | 1       |
| AGSP20-12B  | AGSP20-12S   | M20×1.5     | Φ20.2         | 7           | 12  | 13   | 89    | 24 | 26.5 | 29 | 6 | 1       |

## RSP SERIES

## STRAIN RELIEF CABLE GLAND



RSP dimensions



■ DXF/DWG/PDF drawings available on our website.

## Technical Data

Protection class : IP67  
Temperature range -20°C ~ +80°C

## Components

■ PA = Polyamide

| No. | Part name         | Material       |
|-----|-------------------|----------------|
| 1   | Strain relief cap | PA66 (UL94V-2) |
| -   | Sealing insert    | NBR            |
| 2   | Connector         | PA66 (UL94V-2) |
| 3   | O-ring            | NBR            |
| 4   | Lock- nut         | PA66 (UL94V-2) |

## Product no. / Dimensions

| Product no. |              | G           |               | Cable range |     | L  | H Max | SW   | A  | Pack of |
|-------------|--------------|-------------|---------------|-------------|-----|----|-------|------|----|---------|
| ● Black     | ● Light gray | Thread size | Mounting hole | Min         | Max |    |       |      |    |         |
| RSP12-6B    | RSP12-6S     | M12×1.5     | φ12.2         | 3.5         | 6   | 9  | 62    | 16   | 17 | 1       |
| RSP16-8B    | RSP16-8S     | M16×1.5     | φ16.2         | 4           | 8   | 9  | 69    | 19.5 | 21 | 1       |
| RSP20-11B   | RSP20-11S    | M20×1.5     | φ20.2         | 6           | 11  | 10 | 82    | 24   | 26 | 1       |
| RSP25-16B   | RSP25-16S    | M25×1.5     | φ25.2         | 11          | 16  | 12 | 102   | 33   | 36 | 1       |

## AG SERIES

## HIGH WATER PROTECTION CABLE GLAND

IP68



- High water protection IP68 (1bar / 30min) polyamide cable gland.
- Wide selection, for M8 ~ M50, suitable for  $\Phi 2.5\text{mm}$  ~  $\Phi 42\text{mm}$  cable.
- Super tough and superior heat resistant PA6GF (glass fiber filled PA6) material on cap and connector.
- Safer halogen free, eco-friendly product.

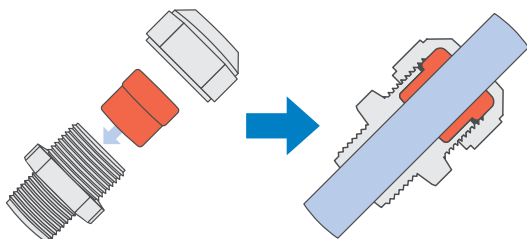
## Technical Data

Protection class: IP68 1bar / 30min  
 Operating temperature:  $-20^{\circ}\text{C}$  ~  $+100^{\circ}\text{C}$   
 Compliant with EN50262 Ver. A

## AG Series

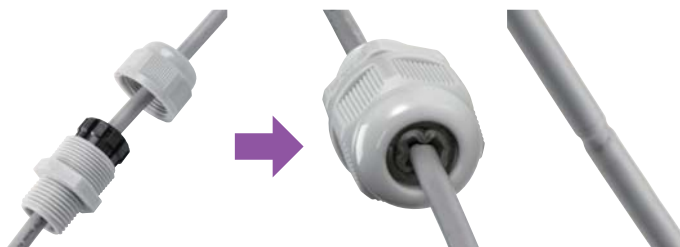
Thicker sealing insert evenly hold a cable by having a larger holding area.

Remains durable even after repeated tightening / loosening.



## Lamellar insert type

If over-tightened, it can cause the rubber bush or cable to deform, which can allow water to seep in.



1

2

3

4

## Components

■ PA6GF = Polyamide6 Glass Fiber Filled

| No. | Part name      | Material |
|-----|----------------|----------|
| 1   | Cap            | PA6GF    |
| 2   | Sealing insert | TPE      |
| 3   | Connector      | PA6GF    |
| 4   | Lock nut       | PA6      |

■ Lock nut is not included for M8 and M10 sizes.

Please drill a proper thread hole into the enclosure for installation.

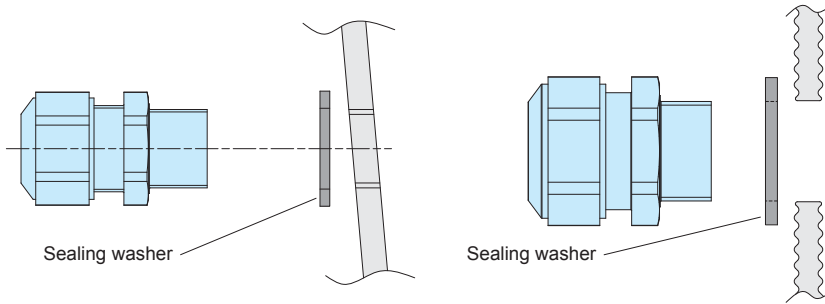
- Proper tightening torque varies by each cable diameter. Tighten the cap until top of the sealing insert forms a small bead between the cap and the cable.



■ No optional sealing washer is required when installing on an even surface because of the built-in waterproof rib.

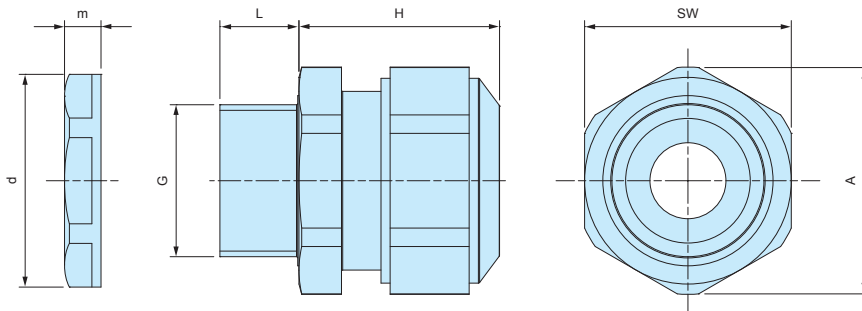
■ An optional sealing washer is required when installing on an uneven surface. (See website for more information on the optional sealing washer)

Waterproof rib



## AG dimensions

■ DXF/DWG/PDF drawings available on our website.



■ Lock nut is not included for M8 and M10 sizes.  
Please drill a proper thread hole into the enclosure for installation.

## Product no. / Dimensions

| Product no. |              | G           |               | Cable range |      | L  | H<br>Max | SW | A    | d    | m   | Pack of |
|-------------|--------------|-------------|---------------|-------------|------|----|----------|----|------|------|-----|---------|
| ● Black     | ● Light gray | Thread size | Mounting hole | Min         | Max  |    |          |    |      |      |     |         |
| AG8-3.5B    | AG8-3.5S     | M8×1.0      | —             | 2.5         | 3.5  | 10 | 17       | 12 | 13.2 | —    | —   | 1       |
| AG8-5B      | AG8-5S       | M8×1.0      | —             | 3.5         | 4.7  | 10 | 17       | 12 | 13.2 | —    | —   | 1       |
| AG10-6B     | AG10-6S      | M10×1.0     | —             | 4           | 6    | 10 | 19       | 15 | 16.5 | —    | —   | 1       |
| AG12-5B     | AG12-5S      | M12×1.5     | Φ12.2         | 3.5         | 4.7  | 12 | 23.5     | 17 | 18.7 | 18.8 | 5   | 1       |
| AG12-6.5B   | AG12-6.5S    | M12×1.5     | Φ12.2         | 5           | 6.5  | 12 | 23       | 17 | 18.7 | 18.8 | 5   | 1       |
| AG12-8B     | AG12-8S      | M12×1.5     | Φ12.2         | 6.5         | 7.8  | 12 | 23       | 17 | 18.7 | 18.8 | 5   | 1       |
| AG16-10B    | AG16-10S     | M16×1.5     | Φ16.2         | 8           | 10   | 12 | 26       | 21 | 23.1 | 24.3 | 5   | 1       |
| AG20-15B    | AG20-15S     | M20×1.5     | Φ20.2         | 11          | 15   | 13 | 27       | 27 | 29.7 | 29   | 6   | 1       |
| AG25-16B    | AG25-16S     | M25×1.5     | Φ25.2         | 12.5        | 16   | 13 | 34       | 34 | 37.4 | 36   | 6.7 | 1       |
| AG25-20B    | AG25-20S     | M25×1.5     | Φ25.2         | 16          | 20   | 13 | 34       | 34 | 37.4 | 36   | 6.7 | 1       |
| AG32-25.5B  | AG32-25.5S   | M32×1.5     | Φ32.3         | 21          | 25.5 | 15 | 36       | 41 | 45.6 | 46   | 8   | 1       |
| AG40-28.5B  | AG40-28.5S   | M40×1.5     | Φ40.3         | 24          | 28.5 | 15 | 41       | 50 | 55.4 | 53.5 | 9   | 1       |
| AG40-33B    | AG40-33S     | M40×1.5     | Φ40.3         | 28.5        | 33   | 15 | 41       | 50 | 55.4 | 53.5 | 9   | 1       |
| AG50-37B    | AG50-37S     | M50×1.5     | Φ50.4         | 33          | 37   | 16 | 45       | 60 | 65.5 | 66   | 9.6 | 1       |
| AG50-42B    | AG50-42S     | M50×1.5     | Φ50.4         | 37          | 42   | 16 | 45       | 60 | 65.5 | 66   | 9.6 | 1       |